

Material:

Housing: 30% Glass Filled PBT UL94V-0.

Contacts: Phosphor Bronze.

Electrical Characteristics:

Current Rating: 1 AMP.

Dielectric Withstanding Voltage: AC 750V For 1 minute.

Insulator Resistance: 10000MΩ min. at DC 500V.

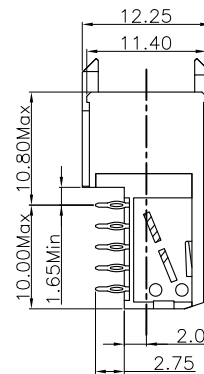
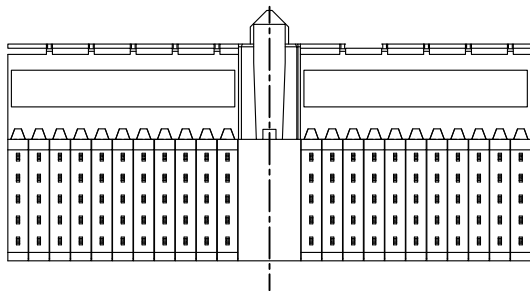
Contact Resistance: 20mΩ max. at DC 100mA.

Operating Temperature: -55°C ~ +125°C .

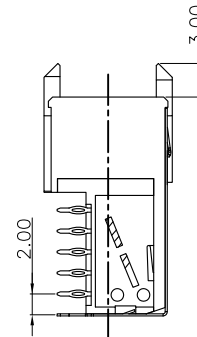
***RoHS Compliant**

Notes:

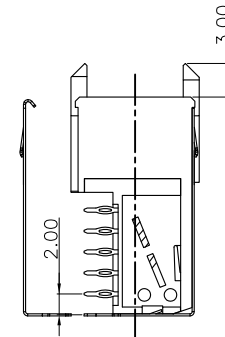
Not bottom surface orient the post.



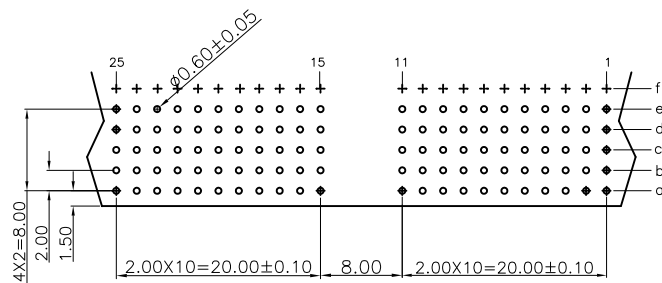
None Shielded



With Top Body Shielded



With Top Body Shielded and Bottom Shielded



P.C. Board Layout
(Top View)

RoHS Compliant

TOLERANCES ARE



煜倫股份有限公司

www.morethanall.com

DRAWING BY CY

CHECKED BY GENIUS

UNIT / mm

SCALE 1 : 1

DATE

SIZE A4

PJECTION

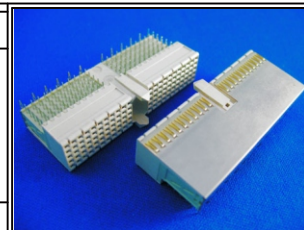
X. ±

.X ±

.XX ±

.XXX ±

ANG ±



ORDER INFORMATION

HM7A-SQxXP-110-LF

SERIES | 110 WAY | LEADFREE

NON POST

X: NONE SHIELDED
T: WITH TOP BODY SHIELDED
A: WITH TOP BODY SHIELDED AND BOTTOM SHIELDED

90° PRESS FIT

DESCRIPTION: