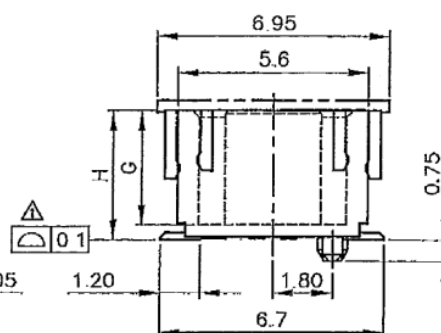


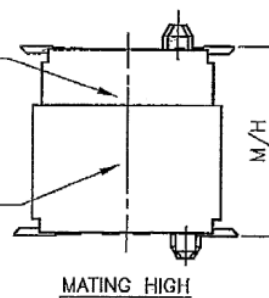
RECOMMENDED PCB LAYOUT

NOTES: MATERIAL & FINISH  
1.INSULATOR:HIGH-TEMP THERMOPLASTIC, UL94V-0  
COLOR: WHITE  
2.CONTACT: COPPER ALLOY  
PLATING: GOLD FLASH OR SOLDER AREA TIN(LEAD FREE)  
CONTACT AREA GOLD FLASH  
OVERALL NICKEL UNDER PLATED



FX8-SxxP-xxx

FX8-PxxP-xxx



PIN	A	B	C	D	E	F	PIN	A	B	C	D	E	F
70	27.5	26.1	23.8	20.4	25.2	22.5	10	9.5	8.1	5.8	2.4	7.2	4.5
72	28.1	26.7	24.4	21.0	25.8	23.1	12	10.1	8.7	6.4	3.0	7.8	5.1
74	28.7	27.3	25.0	21.6	26.4	23.7	14	10.7	9.3	7.0	3.6	8.4	5.7
76	29.3	27.9	25.6	22.2	27.0	24.3	16	11.3	9.9	7.6	4.2	9.0	6.3
78	29.9	28.5	26.2	22.8	27.6	24.9	18	11.9	10.5	8.2	4.8	9.6	6.9
80	30.5	29.1	26.8	23.4	28.2	25.5	20	12.5	11.1	8.8	5.4	10.2	7.5
82	31.1	29.7	27.4	24.0	28.8	26.1	22	13.1	11.7	9.4	6.0	10.8	8.1
84	31.7	30.3	28.0	24.6	29.4	26.7	24	13.7	12.3	10.0	6.6	11.4	8.7
86	32.3	30.9	28.6	25.2	30.0	27.3	26	14.3	12.9	10.6	7.2	12.0	9.3
88	32.9	31.5	29.2	25.8	30.6	27.9	28	14.9	13.5	11.2	7.8	12.6	9.9
90	33.5	32.1	29.8	26.4	31.2	28.5	30	15.5	14.1	11.8	8.4	13.2	10.5
92	34.1	32.7	30.4	27.0	31.8	29.1	32	16.1	14.7	12.4	9.0	13.8	11.1
94	34.7	33.3	31.0	27.6	32.4	29.7	34	16.7	15.3	13.0	9.6	14.4	11.7
96	35.3	33.9	31.6	28.2	33.0	30.3	36	17.3	15.9	13.6	10.2	15.0	12.3
98	35.9	34.5	32.2	28.8	33.6	30.9	38	17.9	16.5	14.2	10.8	15.6	12.9
A0	36.5	35.1	32.8	29.4	34.2	31.5	40	18.5	17.1	14.8	11.4	16.2	13.5
C0	42.5	41.1	38.8	35.4	40.2	37.5	42	19.1	17.7	15.4	12.0	16.8	14.1
E0	48.5	47.1	44.8	41.4	46.2	43.5	44	19.7	18.3	16.0	12.6	17.4	14.7

M/H	TYPE	G	H
3.0,4.0	01	1.75	2.25
3.5,4.5	02		2.75
5.0,6.0,7.0 8.0,9.0	03	3.45	3.95
5.5,6.5,7.5 8.5,9.5	04		4.45
10.0,11.0,12.0 13.0,14.0 15.0,16.0	05		8.95
10.5,11.5,12.5 13.5,14.5 15.5,16.5	06		9.45

FX8-SxxPC-xxx-LF  
LEADFREE  
22:2.25mm  
27:2.75mm  
39:3.95mm  
44:4.45mm  
89:8.95mm  
94:9.45mm  
010:10way  
130:130way

RoHS Compliant

MORETHANALL  
CONNECTORS  
ASSEMBLIES

PART NO. FX8-SxxPC-xxx

DWG NO. FX8-SxxPC-xxx

FILE NO.

UNIT / mm

SCALE 1:1

CHECKED BY CY

DRAWING BY

PROJECTION

TOLERANCES ARE

X.±  
.X±  
.XX±  
.XXX±  
ANG

DESCRIPTION:

AREA

REVISIONS

DATE

煜倫股份有限公司