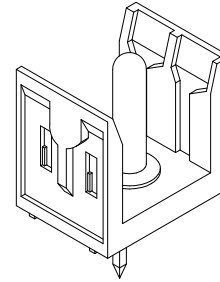
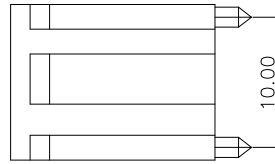


Section A-A'



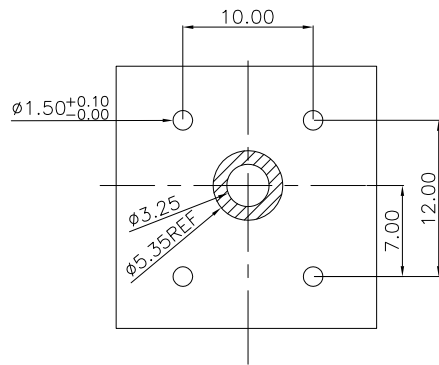
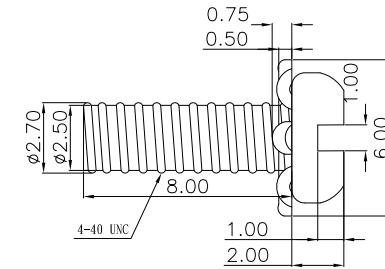
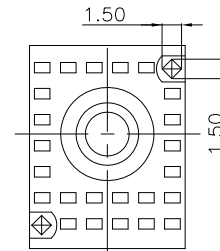
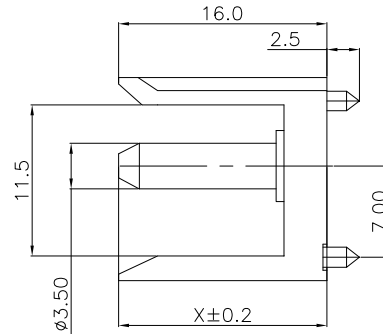
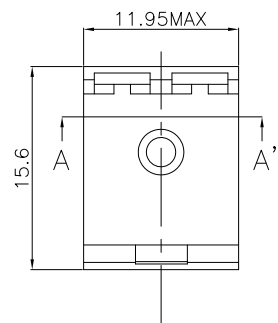
Material:

Housing: High Temperature Plastic UL94V-0.
Contacts: Brass.

Electrical Characteristics:

Current Rating: 2.75 AMP.
Dielectric Withstanding Voltage: AC 1000V For 1 minute.
Insulator Resistance: 1000M Ω min. at DC 500V.
Contact Resistance: 30m Ω max. at DC 100mA.
Operating Temperature: -65°C~+125°C.

RoHS Compliant.



P.C. Board Layout
tolerance±0.05

Part No.	X
FUB-MD14-01	14.5
FUB-MD16-01	16.0

RoHS Compliant

TOLERANCES ARE

MORETHANALL
PCB CONNECTORS
Cable ASSEMBLIES

煜倫股份有限公司

www.morethanall.com

DRAWING BY CY

CHECKED BY GENIUS

UNIT / mm

SCALE 1 : 1

DATE

SIZE A4

X, ±
.X ±
.XX ±
.XXX ±
ANG ±

P PROJECTION

照片框

ORDER INFORMATION

FUB-MDxx-01-LF
SERIES | LEADFREE
01 WAY
14: 14.5mm
16: 16.0mm
180°
MALE

DESCRIPTION: