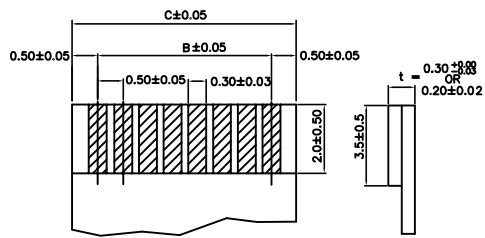


PCB Layout

NOTE

1. MATERIALS: ① HOUSING: LCP NATURAL
 ② COVER: PPS BLACK
 ③ CONTACT: PHOSPHOR BRONZE C5191-H
 ④ LATCH: PHOSPHOR BRONZE C5191-H



FFC/FPC DIMENSION

PIN	A	B	C	D	FOR t	
					0.2	0.3
★ 04	4.00	1.50	2.5	3.35	Y	Y
★ 05	4.50	2.00	3.0	3.85		
★ 06	5.00	2.50	3.5	4.35	Y	Y
★ 07	5.50	3.00	4.0	4.85		
★ 08	6.00	3.50	4.5	5.35		Y
★ 09	6.50	4.00	5.0	5.85		Y
★ 10	7.00	4.50	5.5	6.35	Y	Y
★ 11	7.50	5.00	6.0	6.85		
★ 12	8.00	5.50	6.5	7.35	Y	Y
★ 13	8.50	6.00	7.0	7.85		
★ 14	9.00	6.50	7.5	8.35		Y
★ 15	9.50	7.00	8.0	8.85		Y
★ 16	10.00	7.50	8.5	9.35	Y	Y
★ 17	10.50	8.00	9.0	9.85		
★ 18	11.00	8.50	9.5	10.35		Y
★ 19	11.50	9.00	10.0	10.85		
★ 20	12.00	9.50	10.5	11.35	Y	Y
★ 21	12.50	10.00	11.0	11.85		
★ 22	13.00	10.50	11.5	12.35		Y
★ 23	13.50	11.00	12.0	12.85		
★ 24	14.00	11.50	12.5	13.35	Y	Y
★ 25	14.50	12.00	13.0	13.85		
★ 26	15.00	12.50	13.5	14.35		
★ 27	15.50	13.00	14.0	14.85		
★ 28	16.00	13.50	14.5	15.35		
★ 29	16.50	14.00	15.0	15.85		
★ 30	17.00	14.50	15.5	16.35		Y
★ 31	17.50	15.00	16.0	16.85		Y
★ 32	18.00	15.50	16.5	17.35		Y

PIN	A	B	C	D	FOR t	
					0.2	0.3
★ 33	18.50	16.00	17.0	17.85		
★ 34	19.00	16.50	17.5	18.35		
★ 35	19.50	17.00	18.0	18.85		Y
★ 36	20.00	17.50	18.5	19.35		
★ 37	20.50	18.00	19.0	19.85		
★ 38	21.00	18.50	19.5	20.35		
★ 39	21.50	19.00	20.0	20.85		
★ 40	22.00	19.50	20.5	21.35		Y
★ 41	22.50	20.00	21.0	21.85		
★ 42	23.00	20.50	21.5	22.35		
★ 43	23.50	21.00	22.0	22.85		
★ 44	24.00	21.50	22.5	23.35		
★ 45	24.50	22.00	23.0	23.85		
★ 46	25.00	22.50	23.5	24.35		
★ 47	25.50	23.00	24.0	24.85		
★ 48	26.00	23.50	24.5	25.35		
★ 49	26.50	24.00	25.0	25.85		
★ 50	27.00	24.50	25.5	26.35		Y

★ 記號者為已開模PIN數



煜倫股份有限公司

www.morethanall.com

RoHS Compliant

DRAWING BY CY

CHECKED BY GENIUS

UNIT / mm

SCALE 1 : 1

DATE

SIZE A4

TOLERANCES ARE

- X, ±
- .X ± 0.20
- .XX ± 0.10
- .XXX ± 0.05
- ANG ±

PJECTION



ORDER INFORMATION

FPV-WHB09xxxR-xx-LF

SERIES | | | | 04-50WAY LEADFREE

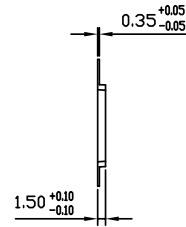
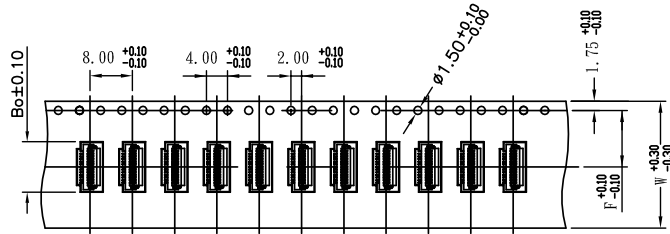
90°SMT REEL
 HINGED ZIF BLANK:TIN
 BOTTOM CONTACT G:GOLD

HIGH 0.98mm BLANK:0.3mm FPC CABLE
 F2:0.2mm FPC CABLE

DESCRIPTION:

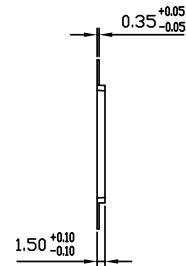
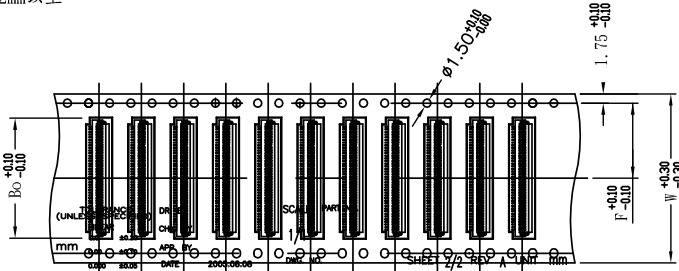
W尺寸24mm以下

包裝尺寸



SECTION A-A

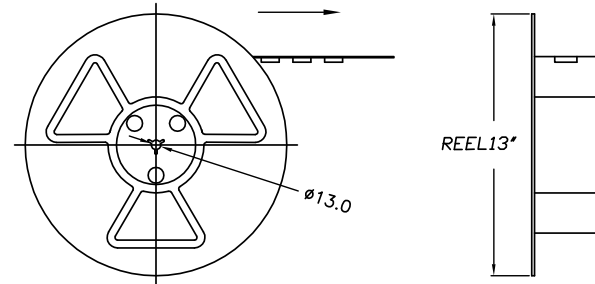
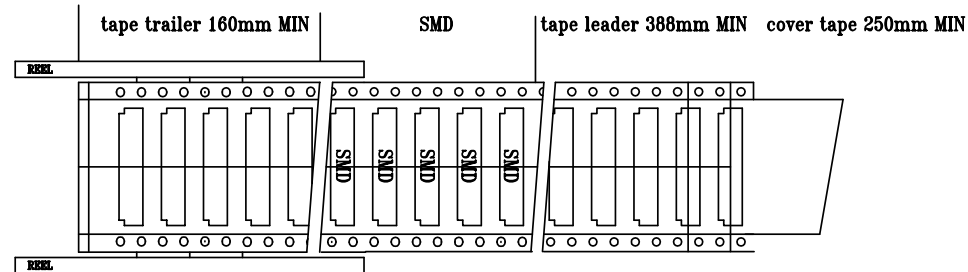
W尺寸32mm以上



SECTION A-A

PIN	W	F	B ₀
04	120	5.5	4.3
05	120	5.5	4.8
06	120	5.5	5.3
07	120	5.5	5.8
08	120	5.5	6.3
09	120	5.5	6.8
10	160	7.5	7.3
11	160	7.5	7.8
12	160	7.5	8.3
13	160	7.5	8.8
14	160	7.5	9.3
15	160	7.5	9.8
16	160	7.5	10.3
17	160	7.5	10.8
18	240	11.5	11.3
19	240	11.5	11.8
20	240	11.5	12.3
21	240	11.5	12.8
22	240	11.5	13.3
23	240	11.5	13.8
24	240	11.5	14.3
25	240	11.5	14.8
26	240	11.5	15.3
27	240	11.5	15.8

PIN	W	F	B ₀
28	240	11.5	16.3
29	240	11.5	16.8
30	240	11.5	17.3
31	240	11.5	17.8
32	240	11.5	18.3
33	240	11.5	18.8
34	320	14.2	19.3
35	320	14.2	19.8
36	320	14.2	20.3
37	320	14.2	20.8
38	320	14.2	21.3
39	320	14.2	21.8
40	44.0	20.2	22.3
41	44.0	20.2	22.8
42	44.0	20.2	23.3
43	44.0	20.2	23.8
44	44.0	20.2	24.3
45	44.0	20.2	24.8
46	44.0	20.2	25.3
47	44.0	20.2	25.8
48	44.0	20.2	26.3
49	44.0	20.2	26.8
50	44.0	20.2	27.3



RoHS Compliant

TOLERANCES ARE

MORETHANALL
PCB CONNECTORS
Cable ASSEMBLIES

DRAWING BY CY

X, ±

CHECKED BY GENIUS

.X, ±

UNIT / mm

SCALE 1 : 1

.XXX, ±

DATE

ANG, ±

SIZE A4

P PROJECTION

照片框

ORDER INFORMATION

FPV-WHB09xxxR-xx-LF

SERIES | | | | 04-50WAY LEADFREE

90°SMT REEL

HINGED ZIF BLANK:TIN

BOTTOM CONTACT G:GOLD

HIGH 0.98mm BLANK:0.3mm FPC CABLE

F2:0.2mm FPC CABLE

煜倫股份有限公司

www.morethanall.com

DESCRIPTION: