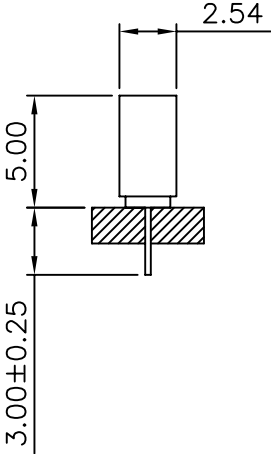
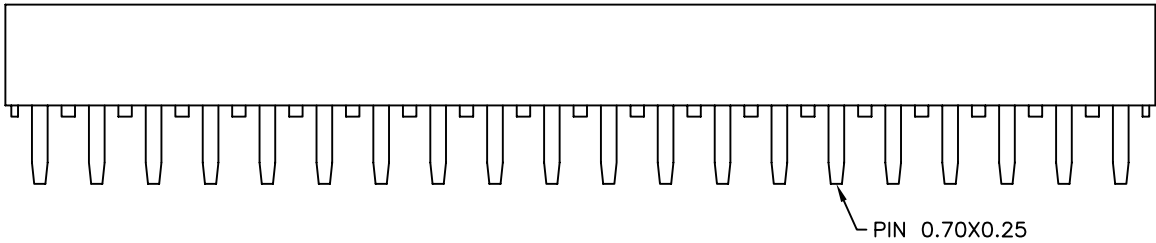
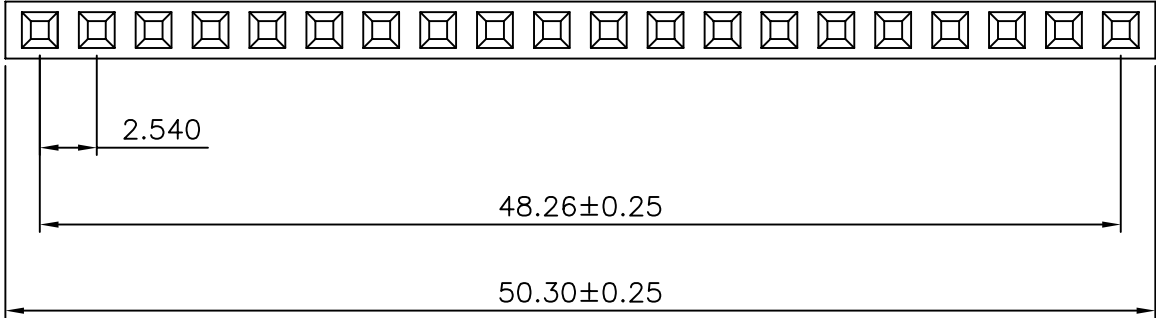


Specifications

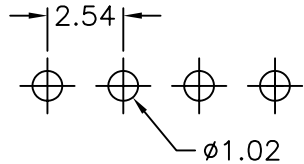
Current Rating: 3Amp  
 Insulation Resistance: 1000MΩ Min.  
 Dielectric Withstanding: 600V AC/DC  
 Contact Resistance: 20mΩ Max.  
 Operating Temperature: -40°C to +105°C

Materials

Contact Material: Phosphor Bronze  
 Insulation Material: Polyester, UL 94V-0  
 P.B.T



Recommended P.C.Board  
 Hole Layout



RoHS Compliant

TOLERANCES ARE



煜倫股份有限公司

www.morethanall.com

DRAWING BY CY

CHECKED BY GENIUS

UNIT / mm

SCALE 1 : 1

DATE

SIZE A4

X, ±  
 .X ± 0.38  
 .XX ± 0.25  
 .XXX ± 0.13  
 ANG ±

PPOJECTION

照片框

ORDER INFORMATION

F-D50-1X20-LF  
 SERIES | LEADFREE  
 20 WAY  
 HIGH 5.0mm  
 DIP 180°

DESCRIPTION: 2.54 FEMALE HEADER SINGLE ROW DIP TYPE BASE 5.00H