

**SPECIFICATIONS**

**ELECTRICAL CHARACTERISTICS:**

Contact Current Rating: 3 Amperes.(Max)  
 Dielectric Withstanding Voltage: AC 1000V/60sec. r.m.s.  
 Insulation Resistance: 500 Megohms Minimum.  
 Contact Resistance: 20 Milliohms Maximum.  
 Operating Temperature: -55°C to +105°C.

**MECHANICAL CHARACTERISTICS:**

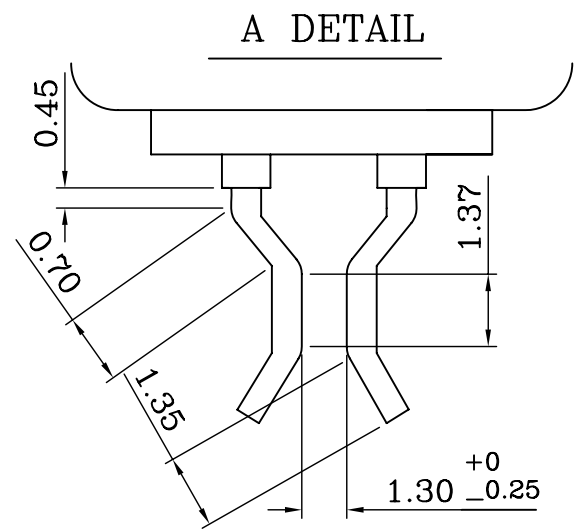
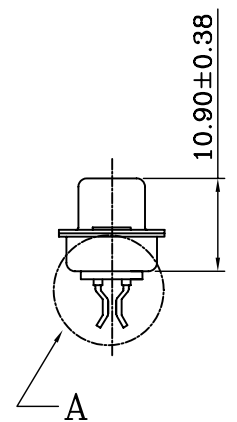
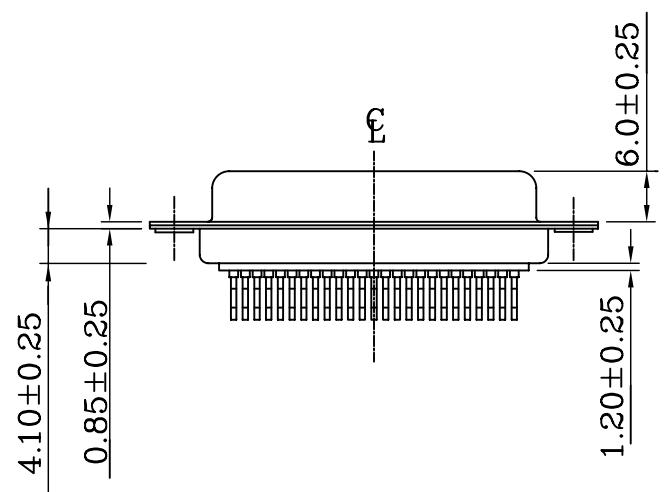
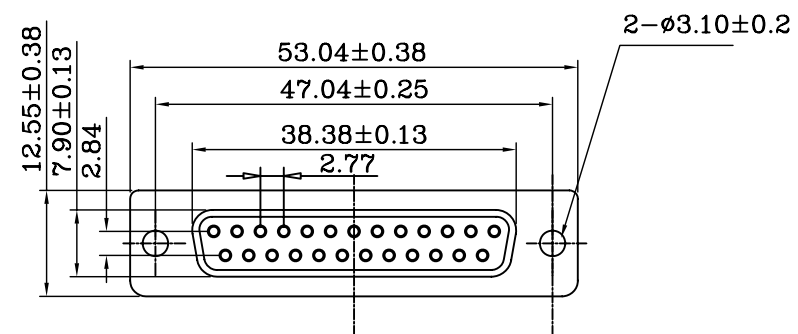
Contact Insertion Force: 341 g. Maximum.  
 Contact Separation Force: 21 g. Minimum.  
 Grounding Screw Torque: 3 Kg Minimum.

**MATERIALS:**

Contacts: Brass.  
 Insulator: PBT UL 94V-0 Rated.  
 Shell: Cold Roller Steel.  
 Grounding Screw: Brass.

**FINISHES:**

Contact: Gold Flash.  
 Shell: Nickel Plated.  
 Grounding Screw: Tin/Lead Plated Over Nickel Underplating.



DY-S13-25-LF

LEADFREE

RoHS Compliant

**MORETHANALL**  
CONNECTORS  
ASSEMBLIES

PART NO. DY-S13-25

DWG NO. DY-S13-25

FILE NO.

CHECKED BY CY

DRAWING BY

TOLERANCES ARE  
 .X ± 0.25  
 .XX ± 0.13  
 .XXX ±  
 AWG

DESCRIPTION: **CLIP S.M.T TYPE**

焜倫股份有限公司

UNIT / mm

SCALE 1:1

PROJECTION

AREA	REVISIONS	HK	DATE	
------	-----------	----	------	--