

Technical Data

Table 1
Material

Coaxial Contact	Brass
Power Contact	Brass
Signal Contact	Brass
Metal Shell	Steel/Dimples on Plug only
Insulator	UL94V-0 Thermoplastic 30% glass filled
Coaxial Center Insulator	Teflon
Metal Bracket	Steel
Boardlock	Brass
Screw	Brass

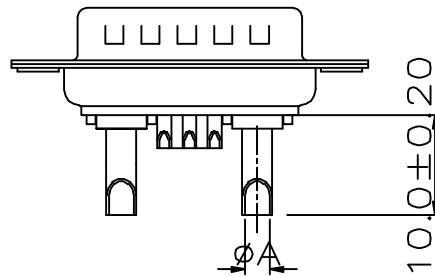
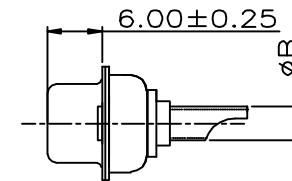
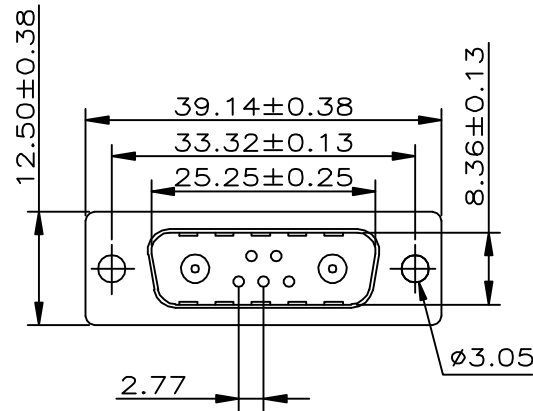
Table 2
Finish

Coaxial Contact	Gold-plated
Power Contact	Gold-plated
Signal Contact	Gold-plated
Metal Shell	Tin or nickel plated
Screw	Nickel plated
Metal Bracket	Nickel plated
Boardlock	Nickel plated

Table 3
Electrical Data

Current Rating	
Signal Contact	5 Amp
Power Contact	10 - 40 Amp
Operating Temperature	-55°C - +125°C
Insulator Resistance	Minimum 5000 MΩ
Contact Resistance	Maximum 10mΩ
Dielectric w/standing Volt	1000 V AC per min
Coaxial contact impedance	75Ω

Plug



Current Rating	Wire Size	Dimension	
		øA	øB
40 Amps	AWG #8	ø4.6	ø5.5
20 Amps	AWG #12	ø2.7	ø3.6
10 Amps	AWG #16	ø1.7	ø2.5

DWS-Pxxxxxy-07W2-LF
LEADFREE
40:40AMP
20:20AMP
10:10AMP
BLANK:GOLD/FLASH
G15:GOLD/15u

RoHS Compliant

MORETHANALL
CONNECTORS
ASSEMBLIES

PART NO. DWS-Pxxxxxy-07W2

DWG NO. DWS-Pxxxxxy-07W2

CHECKED BY CY

TOLERANCES ARE

.X±0.2
.XX±0.1
.XXX±
AWG

DESCRIPTION:

D SUB POWER CONTACT
7W2 Solder Type

煜倫股份有限公司

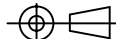
FILE NO.

DRAWING BY

UNIT / mm

SCALE 1:1

PROJECTION



AREA

REVISIONS

HK

DATE