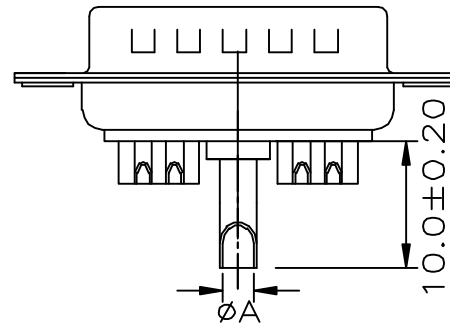
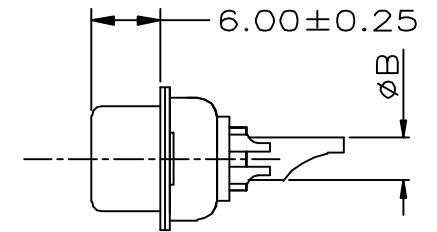
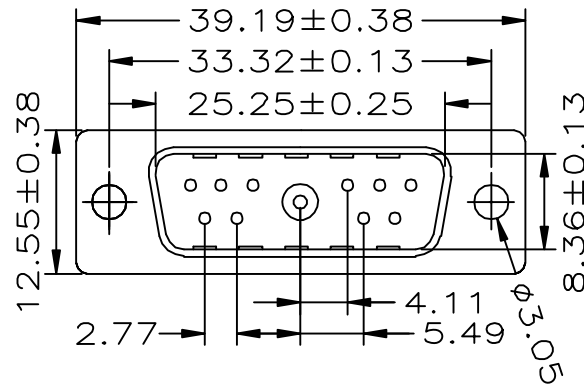


Table 1 Material	
Power Contact	Brass
Signal Contact	Brass
Metal Shell	Steel/Dimples on Plug only
Insulator	UL94V-0 Thermoplastic 30% glass filled
Metal Bracket	Steel
Boardlock	Brass
Screw	Brass

Table 2 Finish	
Power Contact	Gold-plated
Signal Contact	Gold-plated
Metal Shell	Tin or nickel plated
Screw	Nickel plated
Metal Bracket	Nickel plated
Boardlock	Nickel plated

Table 3 Electrical Data	
Current Rating	
Signal Contact	5 Amp
Power Contact	10 - 40 Amp
Operating Temperature	-55°C - +125°C
Insulator Resistance	Minimum 5000 MΩ
Contact Resistance	Maximum 10mΩ
Dielectric w/standing Volt	1000 V AC per min

Table 4 Dimension & Current Rating			
Current Rating	Wire Size	Dimension	
		øA	øB
40 AMPS	AWG #8-10	ø4.6	ø5.5
30 AMPS	AWG #10-12	ø3.7	ø4.6
20 AMPS	AWG #12-14	ø2.7	ø3.6
10 AMPS	AWG #16-18	ø1.7	ø2.5



DWS-Pxx-11W1-LF
LEADFREE

40:40AMP
30:30AMP
20:20AMP
10:10AMP

RoHS Compliant

MORETHANALL
CONNECTORS
ASSEMBLIES

焯倫股份有限公司

PART NO. DWS-Pxx-11W1

DWG NO. DWS-Pxx-11W1

FILE NO.

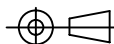
UNIT / mm

SCALE 1:1

CHECKED BY CY

DRAWING BY

PROJECTION



TOLERANCES ARE

.X ± 0.2
.XX ±
.XXX ±
AWG

DESCRIPTION:

D-SUB POWER SERIE
11W1 Solder Type

AREA

REVISIONS

HK

DATE