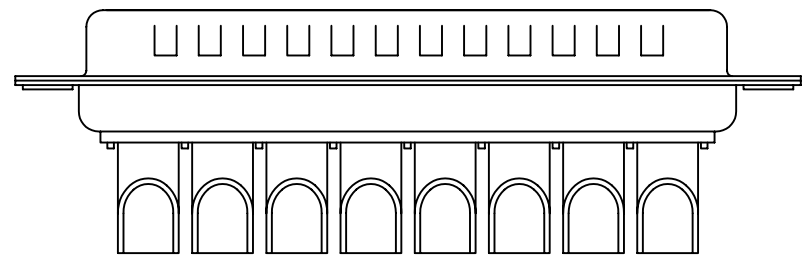
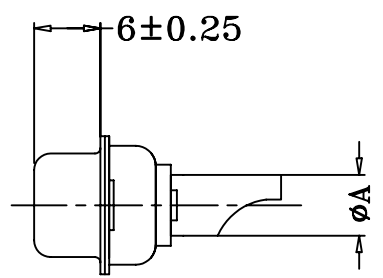
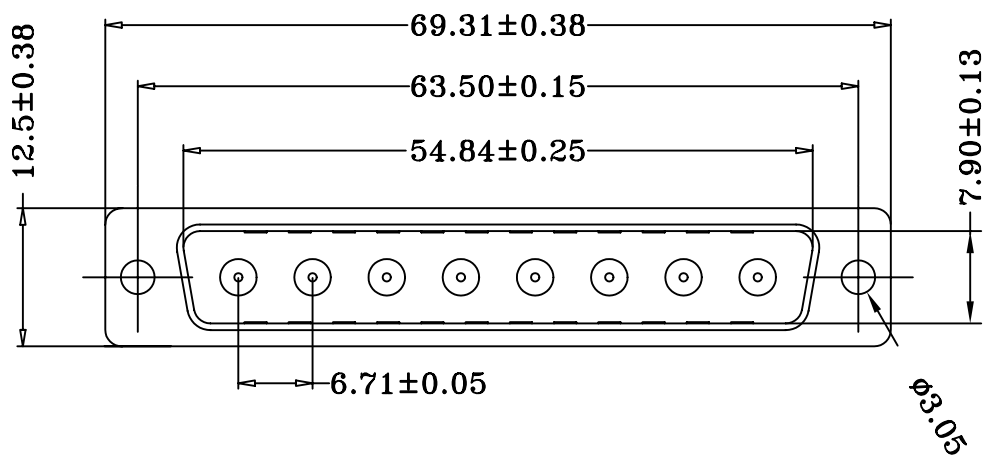


1 2 3 4 5 6 7 8 9 0

J  
I  
H  
G  
F  
E  
D  
C  
B  
A



**MATERIALS AND FINISH**

SHELL : STEEL MATERIAL, TIN FINISHED  
 CONNECTOR INSULATOR : PBT THERMOPLASTIC,  
 30% GLASS FILLED, UL 94V-0 RATED, BLACK COLOR  
 HIGH POWER CONTACT MATERIAL: BRASS, 15u" GOLD PLATED

**ELECTRICAL CHARACTERISTICS**

HIGH POWER CONTACT CURRENT RATING : 10 OR 20 OR 40 AMPS  
 HIGH POWER CONTACT RESISTANCE : 2.7 MILLIOHMS MAX.  
 DIELECTRIC WITHSTANDING VOLTAGE :  
 1000 V AC FOR 1 MINUTE  
 INSULATION RESISTANCE : 5000 MEGAOHMS MIN.  
 TEMPERATURE RATING : -55°C ~ +125°C

PART NO.	Dimension	current rating
DWS-P10-08W8	Ø1.70	10A
DWS-P20-08W8	Ø2.80	20A
DWS-P40-08W8	Ø3.75	40A



煜倫有限公司

PART NO. DWS-Pxx-08W8		CHECKED BY CY		TOLERANCES ARE X .XX .XXX AWG	DESCRIP TION: D-SUB CONNECTOR (Power Contact Solder Type)	AREA	REVISIONS	HK	DATE
DWG NO. DWS-Pxx-08W8		DRAWING BY							
FILE NO.		PROJECTION							
UNIT / mm	SCALE 1:1								