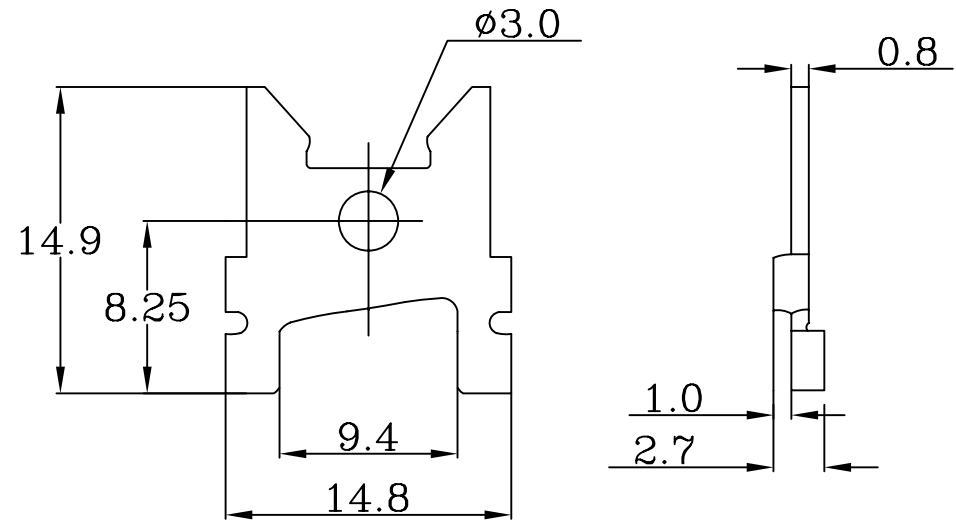
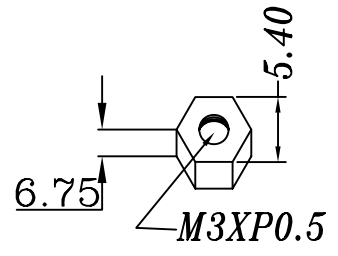


Slot Screw\*4PCS  
Material:Steel, Zinc-Plated



Bail Post\*2PCS  
Material:Steel 0.8t, Zinc-Plated



Hex Nut\*4PCS  
Material:Steel, Zinc-Plated



PART NO. DWL-P-0937

DWG NO. DWL-P-0937

CHECKED BY CY

TOLERANCES ARE

DESCRIP TION:

FILE NO.

DRAWING BY

.X ± 0.2  
.XX ±  
.XXX ±  
AWG

AREA

REVISIONS

HK

DATE

煜倫股份有限公司

UNIT / mm

SCALE 1:1

PROJECTION