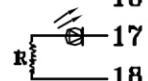
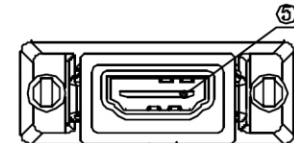
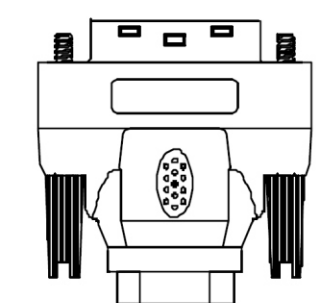
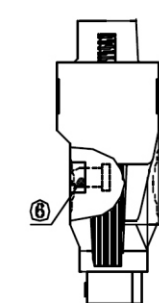
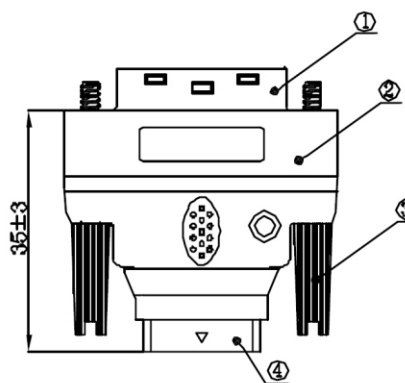
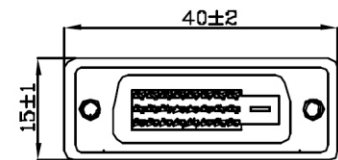


WIRE DIAGRAM

HDMI 19F	DVIDD 25PIN (M)
1	2
2	3
3	1
4	10
5	11
6	9
7	18
8	19
9	17
10	23
11	22
12	24
13	NC
14	NC
15	6
16	7
17	15
18	14
19	16



DVIDD 25M



HDMI 19F

P/N	Color
DVIHDMI-EMBK-2519	Black
DVIHDMI-EMGE-2519	Grey
DVIHDMI-EMBG-2519	Beige

- 100% OPEN / SHORT / INSULATING TEST
- INSULATION TEST: OFF

DVIHDMI-EMxx-2519-LF
LEADFREE

BK:BLACK
GE:GREY
BG:BEIGE

RoHS Compliant

COMPONENTS	DESCRIPTION	Q'TY
1 DVIDD25M	DVI-Digital 25P Male Connector Insulator: High Temperature Plactic UL-94-0 Contact: Brass Shell: Steel With Nickel Plated 150μ" Over Contact Plating: Gold On Contact Area And Tin/LEAD On Solder Cup All With Nickel Underplating	1
2 Hood	P.V.C Molded Color: XXXX	1
3 Jackscrew	UNC #4-40 Metal Nickel Plated Hood: ABS Color: XXXX	2
4 Hood	ABS Molded Color: Black	1
5 PCB(70-540-00)	FR/4 T:0.8mm	1
6 LED	ø3.0mm, Light Color: Green	1



PART NO. DVIHDMI-EMxx-2519

DWG NO. DVIHDMI-EMxx-2519

FILE NO.

CHECKED BY CY

DRAWING BY

TOLERANCES ARE

.X ± 0.2
.XX ±
.XXX ±
AWG

DESCRIP TION:

AREA

REVISIONS

HK

DATE

煜倫股份有限公司

UNIT / mm

SCALE 1:1

PROJECTION

