

| | | | | | | |
|-------|---|------------|---|------------|---|------------|
| 9PIN | A | 30.80±0.25 | B | 25.00±0.25 | C | 16.92±0.25 |
| 15PIN | | 39.20±0.25 | | 33.32±0.25 | | 25.25±0.25 |
| 25PIN | | 53.05±0.25 | | 47.04±0.25 | | 38.96±0.25 |
| 37PIN | | 69.40±0.25 | | 63.50±0.25 | | 55.42±0.25 |

Note:

Specification:

1. Current rating: 1 A Max.
2. Dielectric withstanding voltage: 500 V(ac) for 1 minute.
3. Contact resistance: 30 mW Max.
4. Insulation resistance: 1000 MΩ Min at DC 500V.
5. Temperature range: -55°C~+105°C

| 7 | 6.0 Nut | 2 | Brass | H4.75*6.0 | 80u"min Nickel Plated |
|-----|-------------|--------------|-------------------|---------------------|--|
| 6 | 8.0 Nut | 2 | Brass | H4.75*8.0 | 80u"min Nickel Plated |
| 5 | 3B Nut | 2 | Brass | H4.75*4.75 | 80u"min Nickel Plated |
| 4 | Back-shell | 1 | Cold Rolled Steel | T=0.40mm | Cu:40u"min. 80u"min Tin Plated |
| 3 | Front-shell | 1 | Cold Rolled Steel | T=0.40mm | Cu:40u"min. 80u"min Nickel Plated |
| 2 | Contact | 9 ~ 37 | Brass | T=0.20mm | Contact area:0.8u"min Gold Plated over 40u"Nickel min. Solder area:80u"min Tin Plated over 40u"Nickel min. |
| 1 | Housing | 1 | P,B,T | UL 94-V0 | Black/ White |
| No. | Part Name | Q'ty | Material | Remarks & Thickness | Finish |

RoHS Compliant

TOLERANCES ARE



DRAWING BY CY

CHECKED BY GENIUS

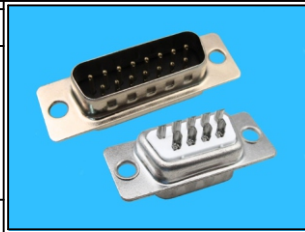
UNIT / mm SCALE 1 : 1

DATE

SIZE A4

X, ±
.X ± 0.30
.XX ± 0.20
.XXX ± 0.10
ANG ± 1°

PJECTION



ORDER INFORMATION

DS-PSxx-xx-LF
SERIES | LEADFREE
09~37WAY
WH:WHITE
BK:BLACK
SEMI GOLD
MALE

DESCRIPTION: D-SUB 9~37PIN(M)SOLDER一體

煜倫股份有限公司

www.morethanall.com