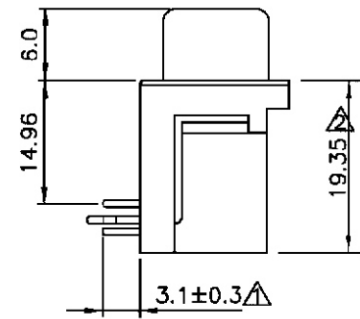
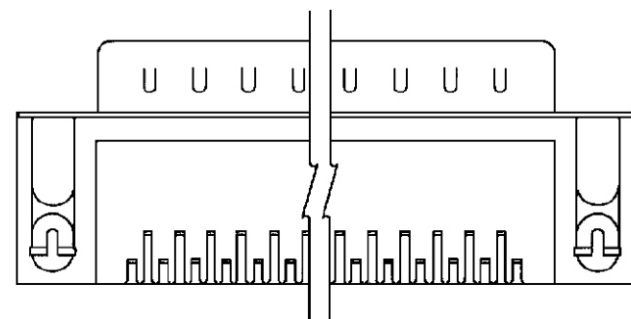
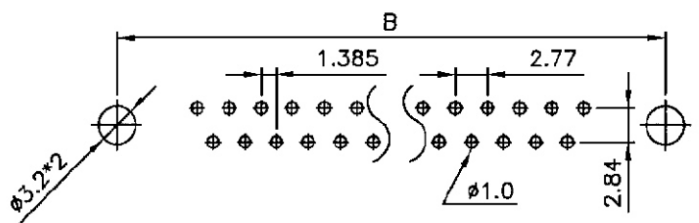


parts no.	DIM. a	DIM. b	inner thread
B	4.8	11.8	4#40
D	5.8	12.0	4#40
F	4.8	11.8	M3
W	4.8	11.8	M2.6
Y	5.8	12.0	M2.6

SPECIFICATION
MATERIAL
 Insulator: Thermal Plastic UL94V-0
 Contacts: Copper Alloy
 Shell: Steel
 Rivet,Boardlock: Copper alloy
CONTACT PLATING
 Underplate: 50μ" Nickel
 Contact Area: 1μ"~30μ" Selective Gold
 Solder Tails Area: 100μ" Tin/Lead(Brighten Tin)or 100μ" Tin/Lead Free(Brighten Tin/Matte Tin)
ELECTRICAL
 Operation Voltage: 250 VAC Max.
 Current Rating: 3 Amps Max.
 Contact Resistance: 15 mohms Max.
 Insulation Resistance: 3000 Mohms Min @ 500 VDC
 Dielectric Withstanding Voltage: 1000 VAC / Minute
 Operating Temperature: -55°C TO +105°C



DRL-PGNH-xx-LF
 N: NUT LEADFREE
 H: HEX SCREW ATTACHED
RoHS Compliant



RECOMMENDED P.C.B LAYOUT(TOP VIEW)
 TOLERANCES: ±0.05mm

POSITION	A	B	C
9M	16.92	25.00	30.8
15M	25.25	33.30	39.2
23M	35.90	44.30	50.3
25M	38.96	47.10	53.1
37M	55.42	63.50	69.4



PART NO. **DRL-PGNH-xx**

DWG NO. **DRL-PGNH-xx**

FILE NO.

UNIT / mm SCALE 1:1

CHECKED BY CY

DRAWING BY

PROJECTION

TOLERANCES ARE
 .X ± 0.2
 .XX ±
 .XXX ±
 AWG

DESCRIP TION:				
	AREA	REVISIONS	HK	DATE

焯倫股份有限公司