

SPECIFICATIONS

ELECTRICAL CHARACTERISTICS:

Contact Current Rating:3 Amperes.
 Dielectric Withstanding Voltage: AC 1000/60sec.r.m.s.
 Insulation Resistance:5000 Medohms Minimum.at DC 500V.
 Contact Resistance:25 Milliohms Maximum.
 Operating Temperature:-55°C to+105°C.

MECHANICAL CHARACTERISTICS:

Contact Insertion Force:341 g.Maximum.
 Contact Separation Force:21 g.Minimum.

MATERIALS:

Contacts:Brass.
 Insulator: PBT UL 94V-0 Rated.
 Shell: Cold Roller Steel.

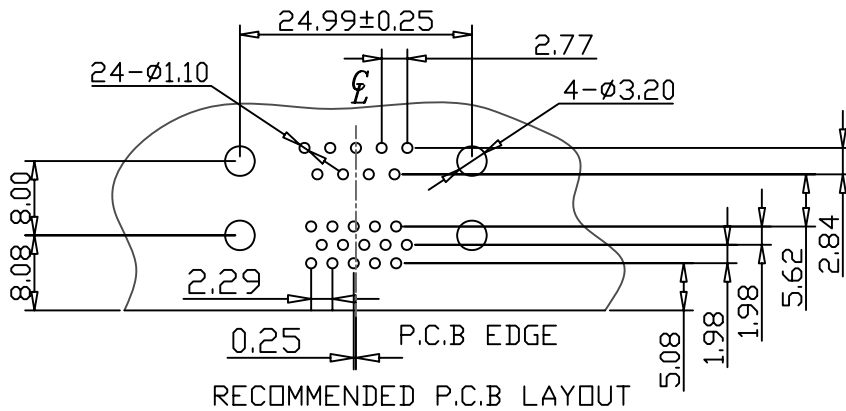
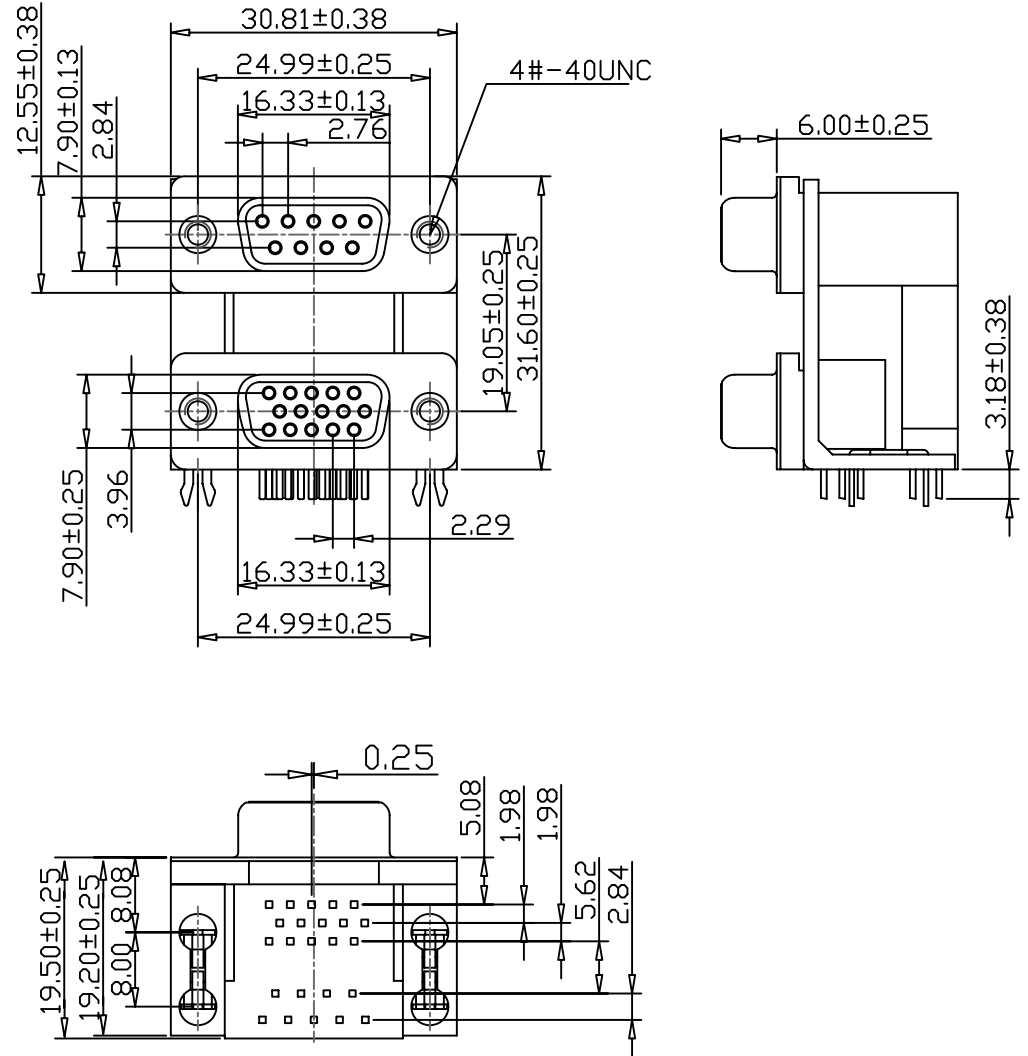
FINISHES:

Contact:Gold Flash.
 Shell:Nickel Plated.

DRB1-FN5-0935-LF

RoHS Compliant

LEADFREE



PART NO. DRB1-FN5-0935

DWG NO. DRB1-FN5-0935

FILE NO.

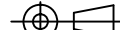
UNIT / mm

SCALE 1:1

CHECKED BY CY

DRAWING BY

PROJECTION



TOLERANCES ARE

.X±0.2
.XX±
.XXX±
AWG

DESCRIPTION:

D-SUB 0.20"(5.08) FOOTPRINT 9 FEMALE /15 FEMALE
HIGH DENSITY CONNECTOR DUAL PORT

AREA

REVISIONS

HK

DATE

煜倫股份有限公司