

**SPECIFICATIONS**

**ELECTRICAL CHARACTERISTICS:**

Contact Current Rating:3 Amperes.  
 Dielectric Withstanding Voltage: AC 1000/60sec.r.m.s.  
 Insulation Resistance:5000 Medohms Minimum.at DC 500V.  
 Contact Resistance:25 Milliohms Maximum.  
 Operating Temperature:-55°C to+105°C.

**MECHANICAL CHARACTERISTICS:**

Contact Insertion Force:341 g.Maximum.  
 Contact Separation Force:21 g.Minimum.

**MATERIALS:**

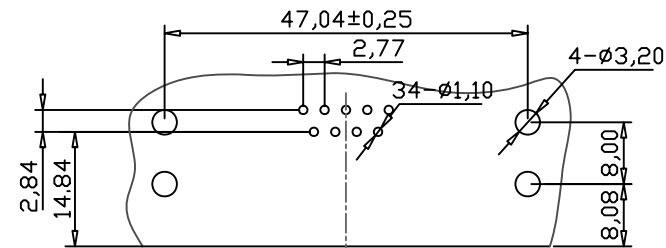
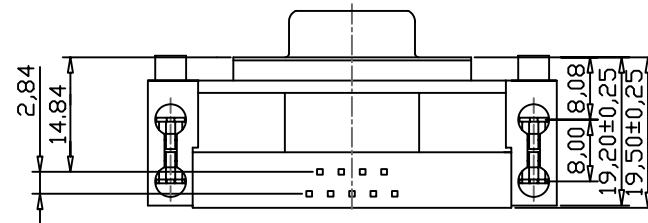
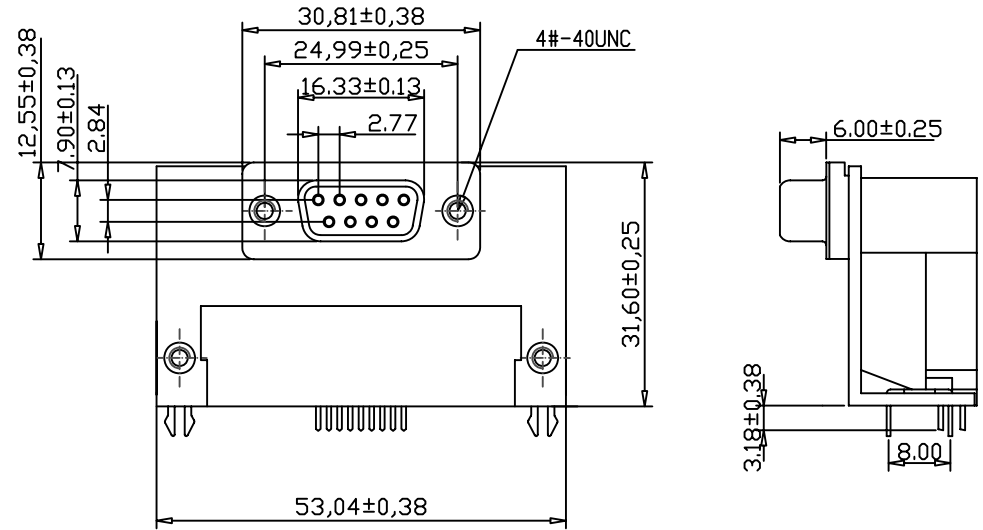
Contacts:Brass.  
 Insulator: PBT UL 94V-0 Rated.  
 Shell:Cold Roller Steel.

**FINISHES:**

Contact:Gold Flash.  
 Shell:Nickel Plated.  
 max soldering temp=200 degree in 10 seconds

DRB1-FN47-0900-LF  
 LEADFREE

RoHS Compliant



P.C.B EDGE  
 RECOMMENDED P.C.B LAYOUT



PART NO. DRB1-FN47-0900

DWG NO. DRB1-FN47-0900

FILE NO.

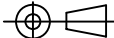
UNIT / mm

SCALE 1:1

CHECKED BY CY

DRAWING BY

PROJECTION



TOLERANCES ARE

.X ± 0.2  
 .XX ±  
 .XXX ±  
 AWG

DESCRIP TION:

AREA

**D-SUB 0.318"(8.08) FOOTPRINT  
 9 FEMALE / NONE DUAL PORT**

REVISIONS

HK

DATE

煜倫股份有限公司