

**SPECIFICATIONS**

**ELECTRICAL CHARACTERISTICS:**

Contact Current Rating:5 Amperes.  
 Dielectric Withstanding Voltage: AC 1000/60sec.r.m.s.  
 Insulation Resistance:5000 Medohms Minimum  
 Contact Resistance:25 Milliohms Maximum.  
 Operating Temperature:-55°C to+105°C.

**MECHANICAL CHARACTERISTICS:**

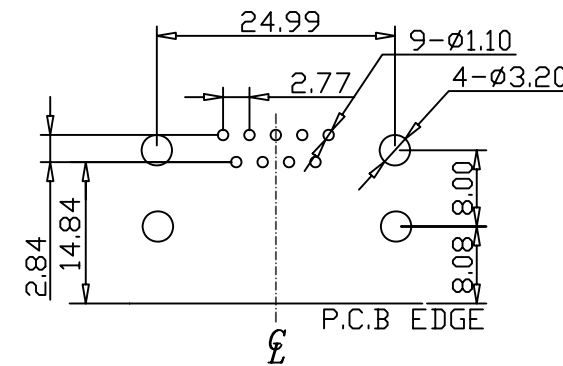
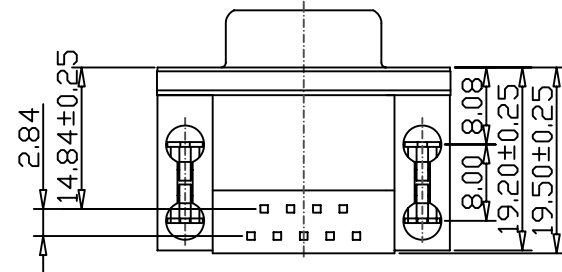
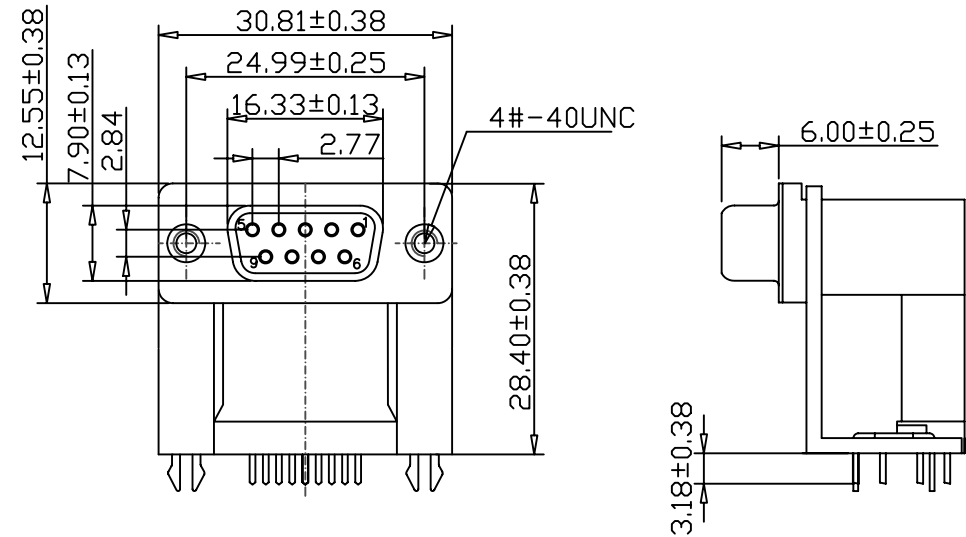
Contact Insertion Force:341 g.Maximum.  
 Contact Separation Force:21 g.Minimum.

**MATERIALS:**

Contacts:Brass.  
 Insulator: PBT UL 94V-0 Rated.  
 Shell: Cold Roller Steel.

**FINISHES:**

Contact:Gold Flash.  
 Shell:Nickel Plated.



DRB1-FN15-0900-LF  
 LEADFREE

RoHS Compliant



PART NO. DRB1-FN15-0900

DWG NO. DRB1-FN15-0900

FILE NO.

UNIT / mm

SCALE 1:1

CHECKED BY CY

DRAWING BY

PROJECTION

TOLERANCES ARE

.X±0.2  
 .XX±  
 .XXX±  
 AWG

DESCRIPTION:

**D-SUB CONNECTOR 9 FEMALE/  
 9 FEMALE DUAL PORT**

AREA

REVISIONS

HK

DATE

煜倫股份有限公司