

SPECIFICATIONS

ELECTRICAL CHARACTERISTICS:

Contact Current Rating: 3 Amperes.
 Dielectric Withstanding Voltage: AC 1000/60sec.r.m.s.
 Insulation Resistance: 5000 Megohms Minimum at DC 500V.
 Contact Resistance: 25 Milliohms Maximum.
 Operating Temperature: -55°C to +105°C.

MECHANICAL CHARACTERISTICS:

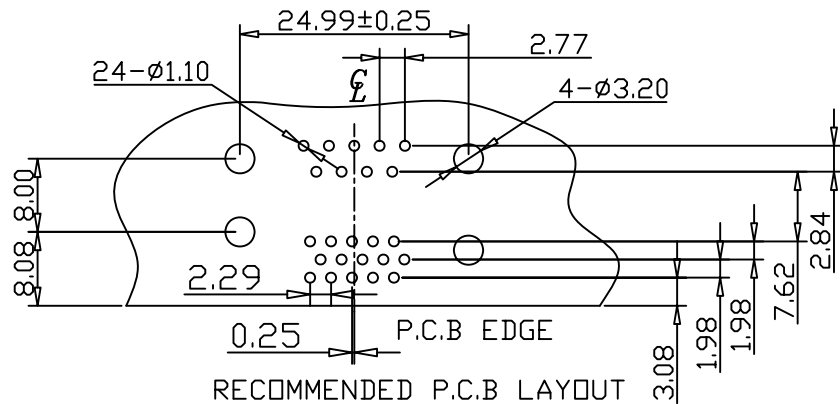
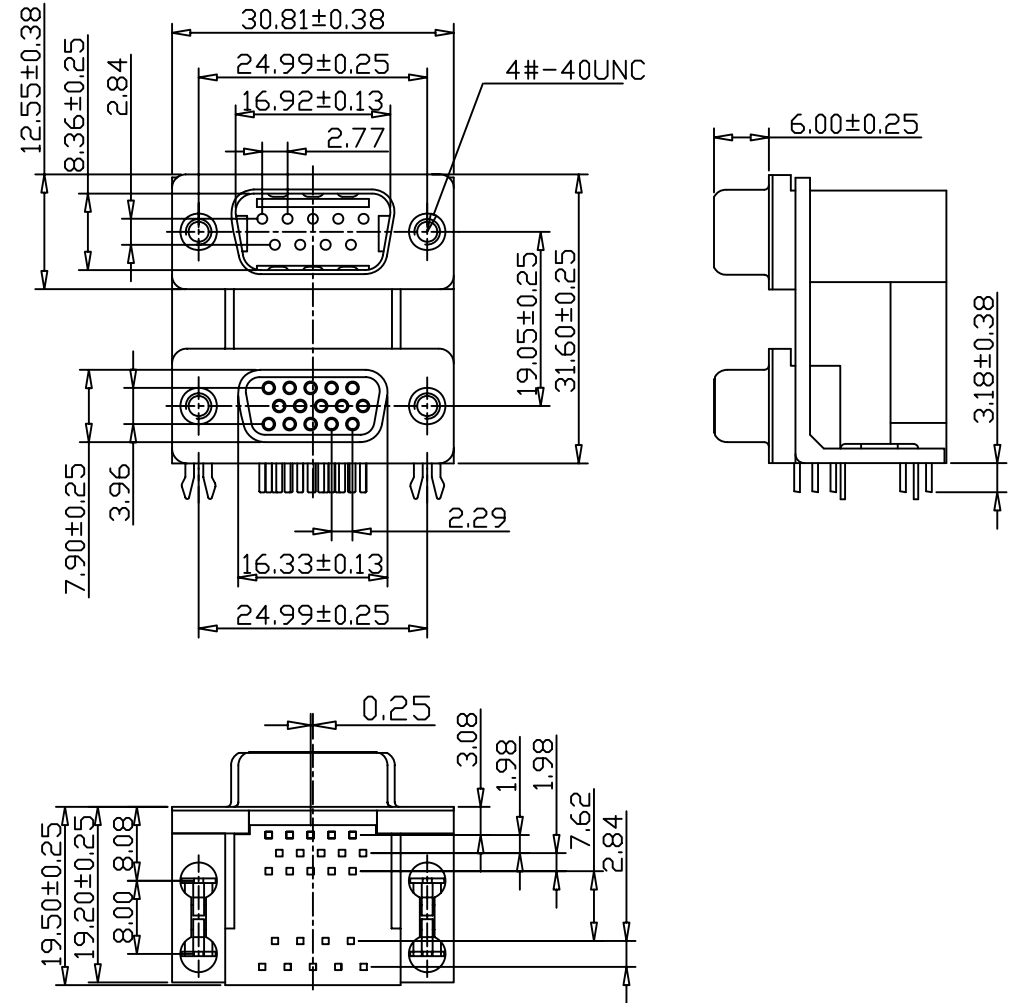
Contact Insertion Force: 341 g. Maximum.
 Contact Separation Force: 21 g. Minimum.

MATERIALS:

Contacts: Brass.
 Insulator: PBT UL 94V-0 Rated.
 Shell: Cold Roller Steel.

FINISHES:

Contact: Gold Flash.
 Shell: Nickel Plated.



RoHS Compliant

TOLERANCES ARE

MORETHANALL
 PCB CONNECTORS
 Cable ASSEMBLIES

DRAWING BY CY

X.±

CHECKED BY GENIUS

.X±

UNIT / mm

SCALE 1 : 1

.XXX±

DATE

ANG ±

SIZE A4

P PROJECTION

照片框

ORDER INFORMATION

DRB1-EN193-0935-LF

SERIES

LEADFREE

09 MALE TO 15 FEMALE

3.08mm

SPACING 19.05mm

NUT

MALE TO FEMALE

DESCRIPTION: D-SUB 0.121"(3.08) FOOTPRINT 9 MALE / 15 FEMALE
 HIGH DENSITY CONNECTOR DUAL PORT

煜倫股份有限公司

www.morethanall.com