

**SPECIFICATIONS**

**ELECTRICAL CHARACTERISTICS:**

Contact Current Rating:5 Amperes.  
 Dielectric Withstanding Voltage: AC 1000/60sec.r.m.s.  
 Insulation Resistance:5000 Medohms Minimum  
 Contact Resistance:25 Milliohms Maximum.  
 Operating Temperature:-55°C to+105°C.

**MECHANICAL CHARACTERISTICS:**

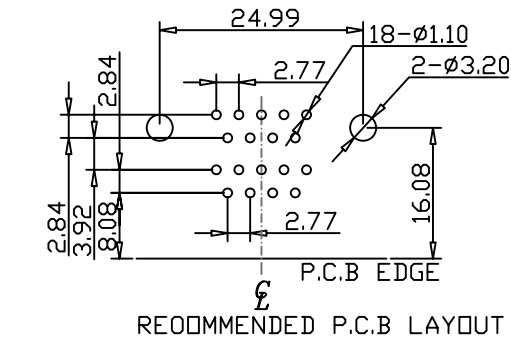
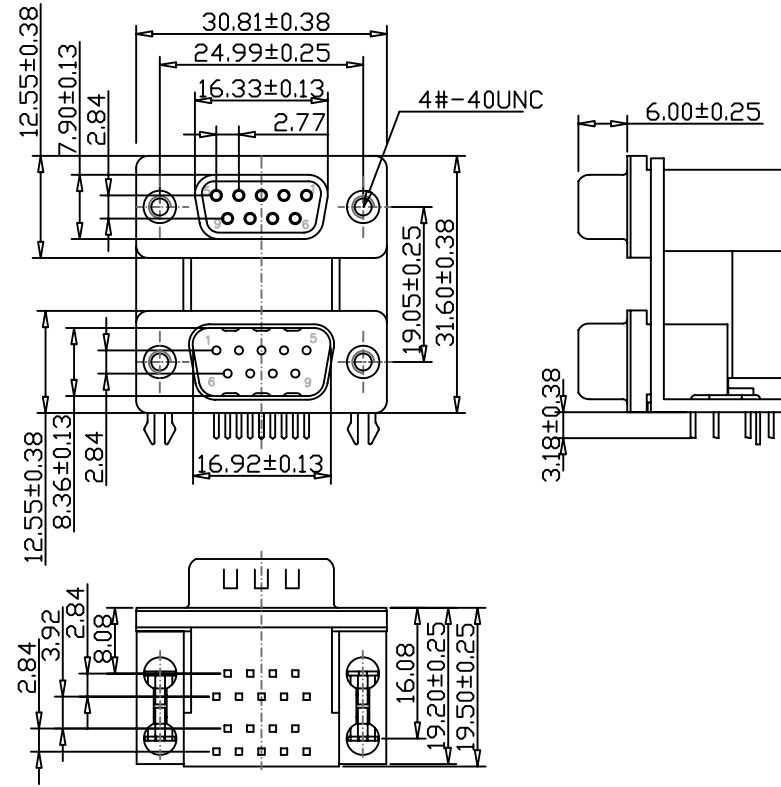
Contact Insertion Force:341 g.Maximum.  
 Contact Separation Force:21 g.Minimum.

**MATERIALS:**

Contacts:Brass.  
 Insulator: PBT UL 94V-0 Rated.  
 Shell: Cold Roller Steel.

**FINISHES:**

Contact:Gold Flash.  
 Shell:Nickel Plated.



煜倫股份有限公司

www.morethanall.com

RoHS Compliant

DRAWING BY CY

CHECKED BY GENIUS

UNIT / mm

SCALE 1 : 1

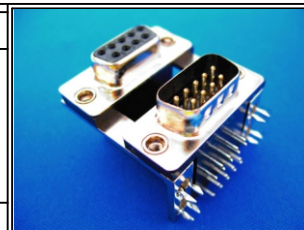
DATE

SIZE A4

TOLERANCES ARE

X. ±  
 .X ±  
 .XX ±  
 .XXX ±  
 ANG ±

P PROJECTION



**ORDER INFORMATION**

DRB1-AN19-0909-LF

SERIES

LEADFREE

09 TO 09 WAY

SPACING 19.05mm

NUT

FEMALE TO MALE

DESCRIPTION: D-SUB CONNECTOR 9 FEMALE/9 MALE DUAL PORT