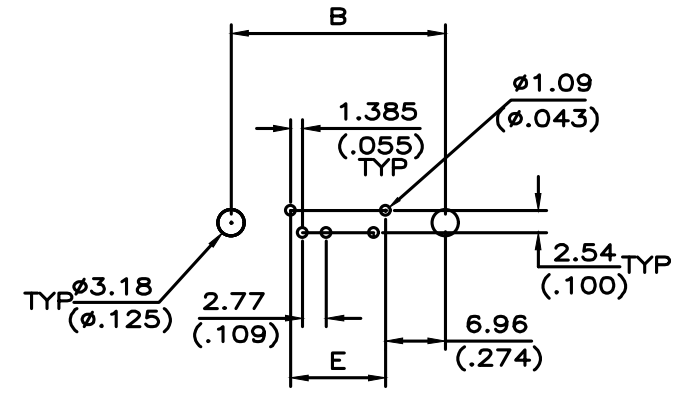
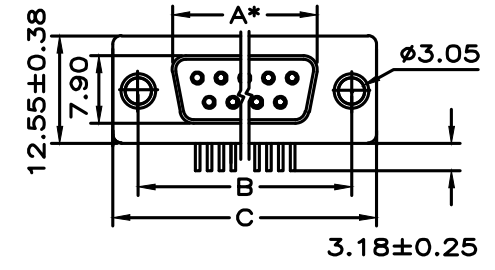
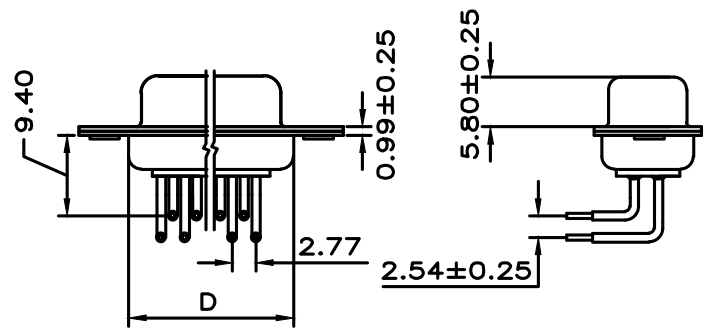


Table 1 Material	
Contact	Brass
Metal Shell	Steel/Dimples on Plug only
Insulator	UL94V-0 Thermoplastic 30% glass filled

Table 2 Finish	
Contact	Gold-flashed
Metal Shell	Tin or nickel plated

Table 3 Electrical Data	
Operating Temperature	-55°C - +125°C
Insulator Resistance	Minimum 5000 MΩ
Contact Resistance	Maximum 10mΩ
Dielectric w/standing Volt	1000 V AC per min

Table 4 Dimension					
No. of Contact	A ±0.25 ±.010	B ±0.13 ±.005	C ±0.38 ±.015	D ±0.25 ±.010	E ±0.25 ±.010
09	16.33 .643	24.99 .984	30.81 1.213	19.28 .759	11.08 .436
15	24.66 .971	33.32 1.312	39.14 1.541	27.51 1.083	19.39 .763
25	38.38 1.511	47.04 1.852	53.04 2.088	41.28 1.625	33.24 1.310
37	54.84 2.159	63.50 2.500	69.32 2.729	57.71 2.272	49.86 1.963



P.C.B LAYOUT

RoHS Compliant

TOLERANCES ARE

MORETHANALL
PCB CONNECTORS
Cable ASSEMBLIES
煜倫股份有限公司
www.morethanall.com

DRAWING BY CY
CHECKED BY GENIUS
UNIT / mm SCALE 1:1
DATE
SIZE A4

X, ±
.X ± 0.30
.XX ±
.XXX ±
ANG ± 2°

P PROJECTION



ORDER INFORMATION

DR941-S-xx-LF
SERIES | LEADFREE
09~37WAY
FEMALE

DESCRIPTION: