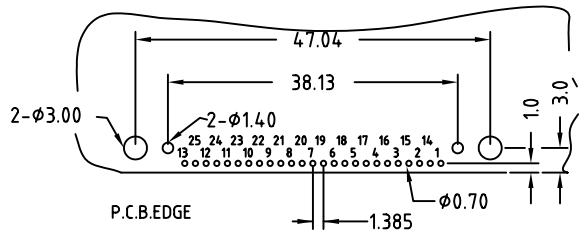


RECOMMEND PCB LAYOUT



ELECTRICAL CHARACTERISTICS

Contact Current Rating:1Amperes.
 Dielectric Withstanding Voltage:AC 500V at sea level.
 Insulation Resistance:1000Megohms Min.
 Contact Resistance:30Milliohms Max.
 Operation Temperature : -55°C to +105°C.

Material

Contact :Copper Alloy.
 Insulator:PBT Select PA6T /LCP /PA9T
 Shell: SPCC.
 Z-Piece: Copper Alloy.

DR12-Sxx-25-LF

LEADFREE

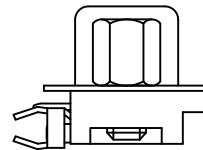
N:NUT

NJ:NUT+JACKSCREW

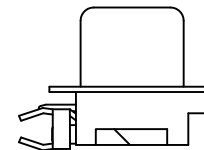
NH:NUT+HS12/ATTACHED

RoHS Compliant

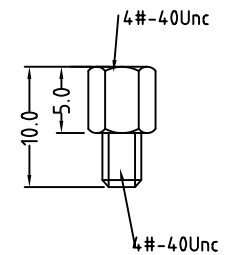
NJ



N



Hs12



MORETHANALL
CONNECTORS
ASSEMBLIES

PART NO. DR12-Sxx-25

DWG NO. DR12-Sxx-25

CHECKED BY CY

TOLERANCES ARE

DESCRIP TION:

SLIM 25F 90D-DIP

煜倫股份有限公司

FILE NO.

DRAWING BY

.X ± 0.2

.XX ± 0.1

.XXX ±

AWG

AREA

REVISIONS

HK

DATE

UNIT / mm

SCALE 1:1

PROJECTION

