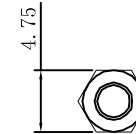
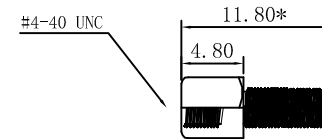


Electrical Characteristics:

1. Current Rating: 5 AMP
2. Withstanding Voltage: AC 500V for 1 Minute.
3. Insulation Resistance: 1000MΩ Min. at DC 500v.
4. Contact Resistance: 15mΩ Max.
5. Operating Temperature: -40° c to 105° c.

Material:

1. Insulator: PBT+30% Glass Fiber (UL94v-0).
  2. Contact: Brass
  3. Contact plated: Glod Flash over Tin or Glod Plated Tin Plated
  4. Shell: Steel Nickel Plated
  5. Housing color: Black
- Plus "\*" as the key control size



RoHS Compliant

TOLERANCES ARE

**MORETHANALL**  
PCB CONNECTORS  
Cable ASSEMBLIES

煜倫股份有限公司

www.morethanall.com

DRAWING BY CY

CHECKED BY GENIUS

UNIT / mm

SCALE 1 : 1

DATE

SIZE A4

X, ±  
.X ± 0.38  
.XX ± 0.25  
.XXX ± 0.15  
ANG ± 2°

PJECTION

照片框

ORDER INFORMATION

DR-PSNH-09-LF  
SERIES | LEADFREE  
| 09 WAY  
| HEX SCREW  
| NUT  
| SEMI GOLD  
| MALE

DESCRIPTION: DR9 公叉鉚鎖半金 8.1