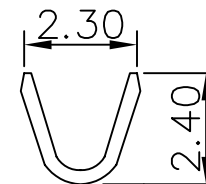
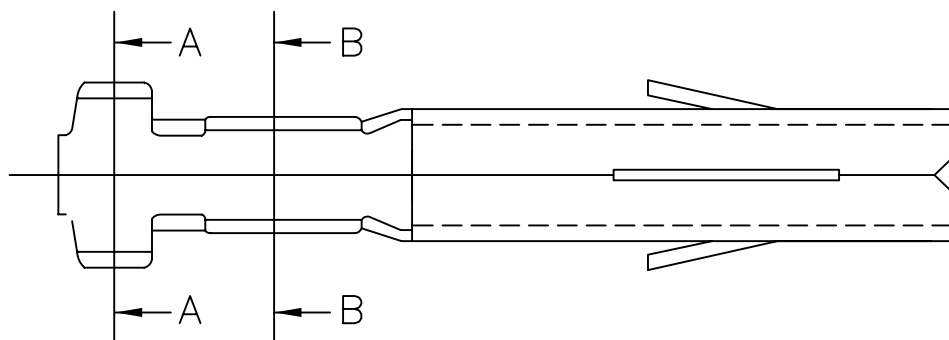
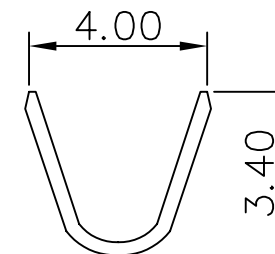
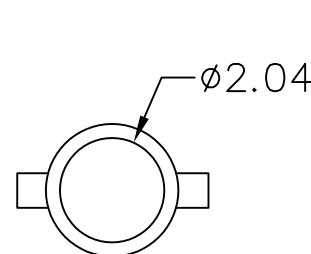
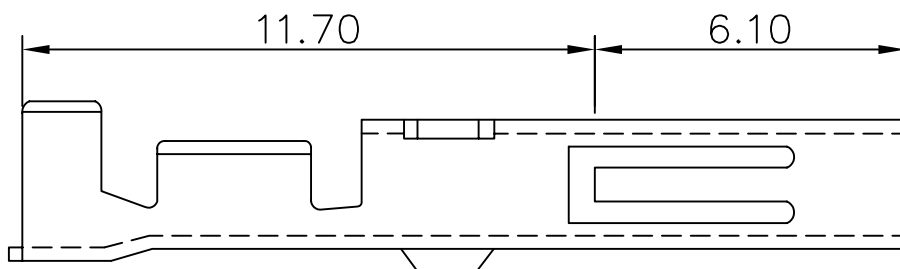


Material: Brass
 Current rating: 5A, AC/DC
 Voltage rating: 250V, AC/DC
 Applicable wire AWG #20-18



B-B



A-A

RoHS Compliant

TOLERANCES ARE

MORETHANALL
 PCB CONNECTORS
 Cable ASSEMBLIES

DRAWING BY CY

CHECKED BY GENIUS

UNIT / mm

SCALE 1 : 1

DATE

SIZE A4

P PROJECTION

X. \pm
 .X \pm
 .XX \pm
 .XXX \pm
 ANG \pm



ORDER INFORMATION

DP-F-18-LF
 SERIES | LEADFREE
 18-20AWG
 FEMALE TERMINAL

煜倫股份有限公司

www.morethanall.com

DESCRIPTION: