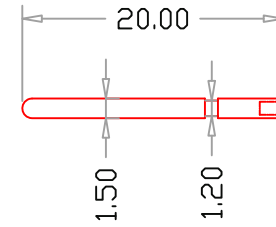
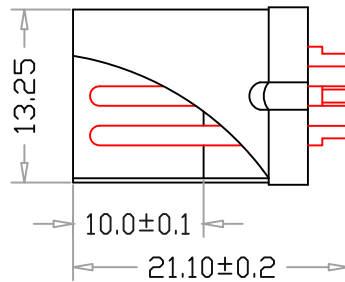
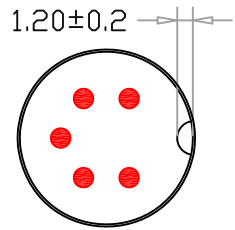
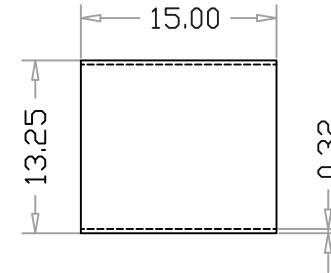


端子



铜管



主要技术特性要求:

1. 环境温度: -25~70°
2. 相对湿度: 95% (40°)
3. 额定负荷: 2A 100V AC
4. 接触电阻: ≤30MΩ
5. 绝缘电阻: ≥80MΩ
6. 耐压: 500V AC(50Hz)1min
7. 插拔力: 3.5±1N
8. 寿命: 3000次
9. 盐雾实验: 24H
10. 公母端对插单PIN拔出力<20g

名称	材质	处理
铜管	H65铜	镀镍-NI80u
端子	H59铜	镀镍-NI80u
主体	PBT+纤25%	黑色

RoHS Compliant

TOLERANCES ARE

MORETHANALL
PCB CONNECTORS
Cable ASSEMBLIES

煜倫股份有限公司

www.morethanall.com

DRAWING BY CY

CHECKED BY GENIUS

UNIT / mm

SCALE 1 : 1

DATE

SIZE A4

X, ±
.X ± 0.30
.XX ± 0.20
.XXX ± 0.10
ANG ±

PJECTION

照片框

ORDER INFORMATION

DM-P-05B-LF
SERIES | LEADFREE
05 WAY B TYPE
MALE

DESCRIPTION: 大DIN5P公240度车针-不通边