

| Dimension Type | A |
|----------------|--------|
| 2.5V | 3.00mm |
| 1.8V | 4.00mm |
| OPEN | 5.00mm |

| Dimension Type | B |
|----------------|--------|
| Long Pin | 3.20mm |
| Short Pin | 2.70mm |

NOTES

*** Material:**

Body: Nylon46+30%G.F, Glass Filled UL 94-0 Rated, Color: Black;
 Ejector: Nylon66, Glass Filled UL 94V-2 Rated, Color: White;
 Latch: Nylon46+30%G.F, Glass Filled UL 94V-0 Rated; Color: Black.
 Contact: Brass
 Contact Plating: Gold Plating Over Nickel On Contact Area
 Tin Plating On Solder Tail;
 Harpoon: Proosphor Bronze
 Harpoon Plating: Nickel Plating.

*** Mechanical:**

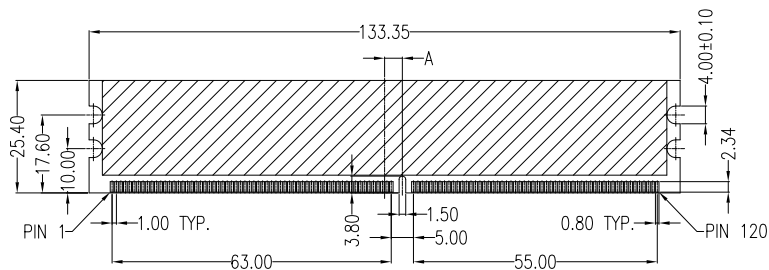
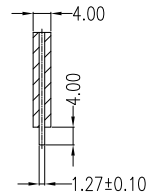
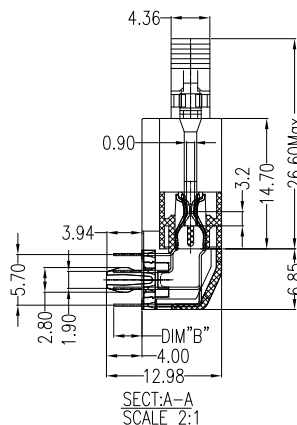
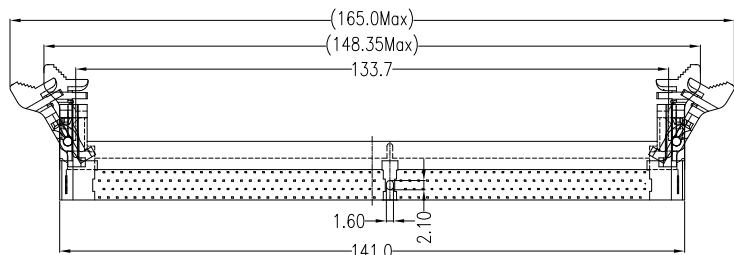
Retention Force-Terminal: 350 Grams MIN. Per;
 Insertion Force: 40~120 Grams/Contact pair
 Unmating Force: 20 Grams (Min)/Contact pair

*** Electrical Specification:**

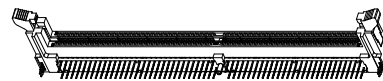
Contact Resistance: 30 Milliohms MAX. Initial;
 Insulation Resistance: 1000 Megohms MIN. AT 500 VDC
 Withstand Voltage: 500 V AC,

*** Environmental:**

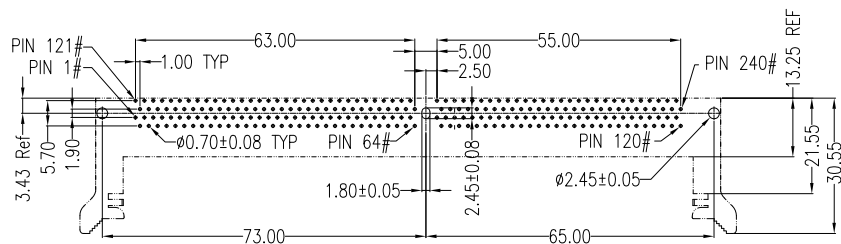
Operating Temperature: -55°C TO +105°C



RECOMMENDED MODULE LAYOUT



Product 3D dwg



P.C.B LAYOUT TOP VIEW

DIM1-Rxxyy-240-LF

LEADFREE

32:3.20mm
27:2.75mm

30:2.5V
40:1.8V
50:OPEN

RoHS Compliant

MORETHANALL
CONNECTORS
ASSEMBLIES

PART NO. DIM1-Rxxyy-240

DWG NO. DIM1-Rxxyy-240

FILE NO.

CHECKED BY CY

DRAWING BY

TOLERANCES ARE

.X ± 0.38
.XX ± 0.25
.XXX ± 0.20
ANG

DESCRIPTION:

DDR2-240 Pins 90D
Connector

AREA

REVISIONS

HK

DATE

焯倫股份有限公司

UNIT / mm

SCALE 1:1

PROJECTION

