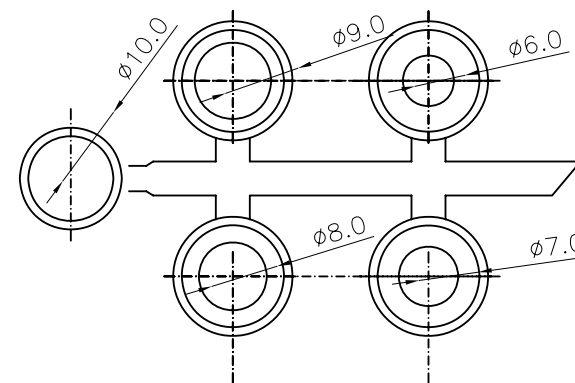
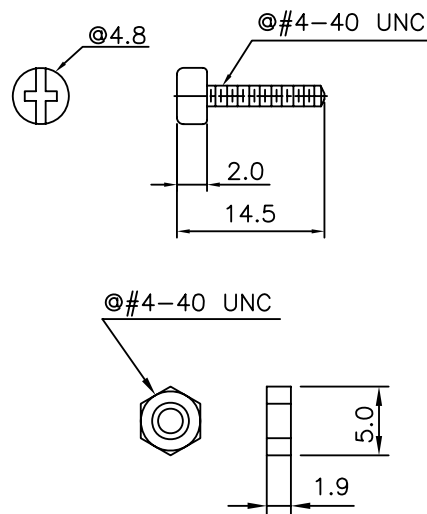
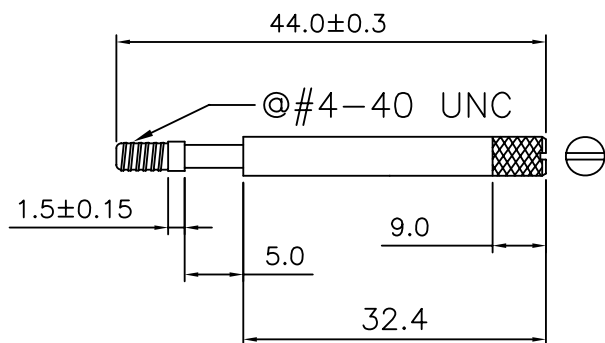
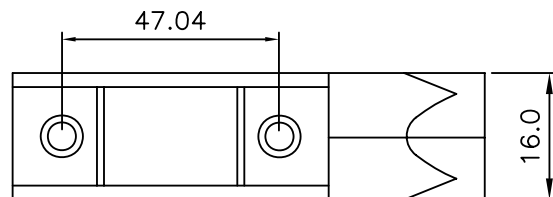


NOTE:
MATERIAL: zinc alloy
SCREW: STEEL
FINISHED: Nickel plated

CABLE ENTRY SIZE:
DIMENSION OF "X"
A=13.0mm



RoHS Compliant

TOLERANCES ARE

MORETHANALL
PCB CONNECTORS
Cable ASSEMBLIES

煜倫股份有限公司

www.morethanall.com

DRAWING BY CY

CHECKED BY GENIUS

UNIT / mm

SCALE 1 : 1

DATE

SIZE A4

X. ± 0.50
.X ± 0.30
.XX ± 0.20
.XXX ±
ANG ±

PPOJECTION

照片框

ORDER INFORMATION

DHAR-N1TFG-25-LF

SERIES
LEADFREE
25 WAY
FULL GROMMET
THUMBScrew
SINGLE PACKING
NICKEL

DESCRIPTION: D-SUB 鑄鐵殼 DB TYPE 25 PIN, 90度, 長螺絲+膠套