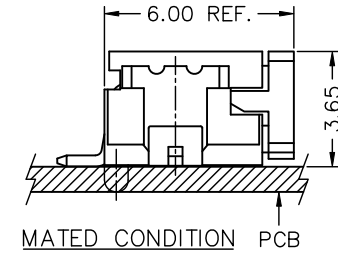
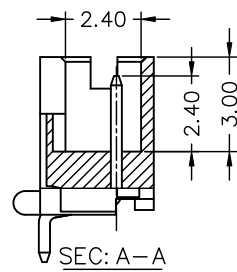
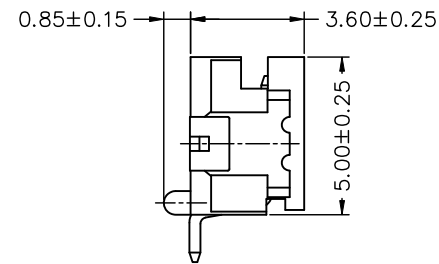
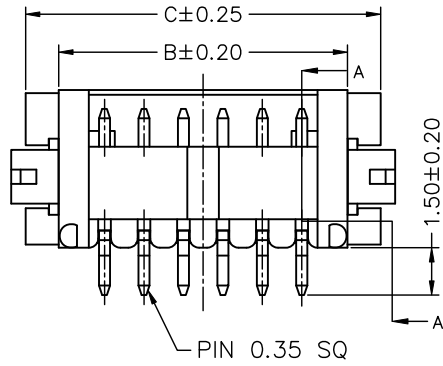


**SPECIFICATIONS**  
 Current Rating: 1A AC,DC  
 Voltage Rating: 150V AC,DC  
 Temperature Range: -25°C ~ +85°C  
 Contact Resistance: 30mΩ Max.  
 Insulation Resistance: 500MΩ Min.  
 Withstanding Voltage: 500V AC/minute  
 Pin Material: Brass/Gold-flash  
 Solder Tabs: Phosphor Bronze/Gold-flash  
 Material: Nylon 6T,UL94V-0  
 Color: Natural(Beige)



Circuit No.	Dimensions			
	A	B	C	D
02P	1.25	4.15	6.25	—
03P	2.50	5.40	7.50	—
04P	3.75	6.65	8.75	4.38
05P	5.00	7.90	10.00	5.63
06P	6.25	9.15	11.25	6.88
07P	7.50	10.40	12.50	8.13
08P	8.75	11.65	13.75	9.38
09P	10.00	12.90	15.00	10.63
10P	11.25	14.15	16.25	11.88
11P	12.50	15.40	17.50	13.13
12P	13.75	16.65	18.75	14.38
13P	15.00	17.90	20.00	15.63
14P	16.25	19.15	21.25	16.88
15P	17.50	20.40	22.50	18.13

RoHS Compliant

TOLERANCES ARE

**MORETHANALL**  
 PCB CONNECTORS  
 Cable ASSEMBLIES  
 煜倫股份有限公司  
 www.morethanall.com

DRAWING BY CY  
 CHECKED BY GENIUS  
 UNIT / mm SCALE 1 : 1  
 DATE  
 SIZE A4 PPROJECTION

X, ±  
 .X ± 0.25  
 .XX ± 0.15  
 .XXX ± 0.05  
 ANG ±



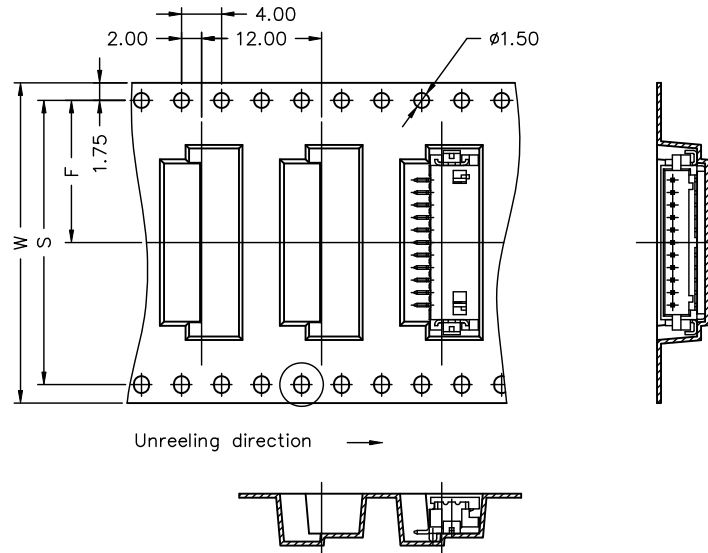
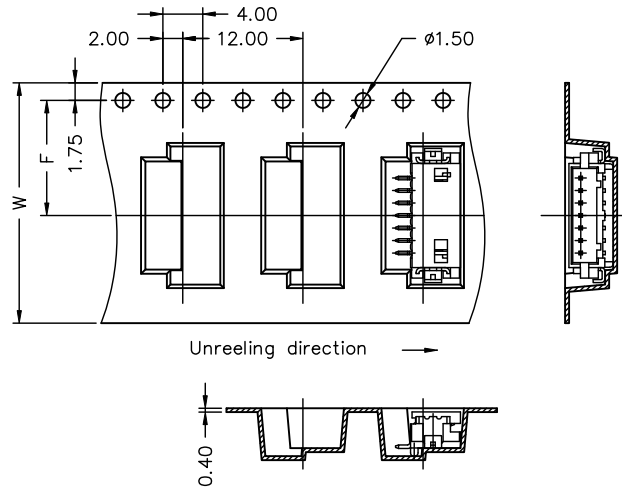
ORDER INFORMATION

DF13-WPR-1Xxx-LF  
 SERIES | LEADFREE  
 | 1X02:02 WAY  
 | 1X15:15 WAY  
 REEL  
 POST  
 90°SMT

DESCRIPTION: 1.25mm PITCH 90° SINGLE ROW WAFER SMT TYPE

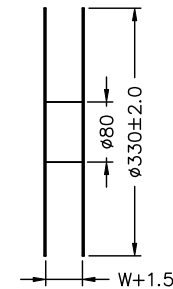
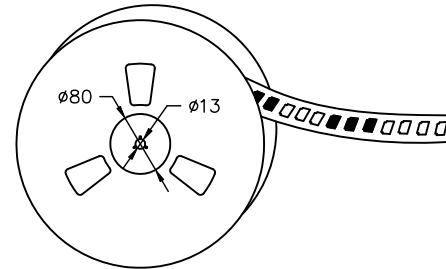
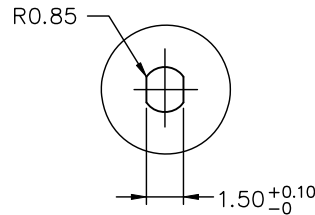
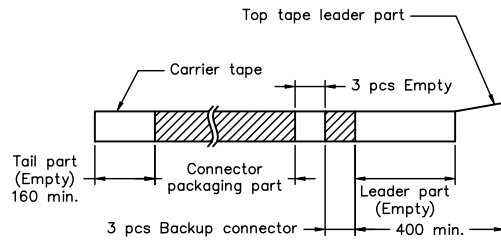
02~08 Contacts

09~15 Contacts



NOTE:  
Material: Transparent  
Anti-static Polystyrene.

Number of Contacts	W±0.3	F±0.1	S±0.1	Q'ty/Reel
02P	16	7.50	/	1,000
03P	16	7.50		1,000
04P	24	11.50		1,000
05P	24	11.50		1,000
06P	24	11.50		1,000
07P	24	11.50		1,000
08P	24	11.50		1,000
09P	32	14.20		28.40
10P	32	14.20	28.40	1,000
11P	32	14.20	28.40	1,000
12P	32	14.20	28.40	1,000
13P	32	14.20	28.40	1,000
14P	44	20.20	40.40	1,000
15P	44	20.20	40.40	1,000



RoHS Compliant

TOLERANCES ARE

**MORETHANALL**  
PCB CONNECTORS  
Cable ASSEMBLIES

DRAWING BY CY

X, ±  
.X ± 0.25  
.XX ± 0.15  
.XXX ± 0.05  
ANG ±

CHECKED BY GENIUS

UNIT / mm SCALE 1 : 1

DATE

SIZE A4

PJECTION

照片框

ORDER INFORMATION

DF13-WPR-1Xxx-LF  
SERIES | LEADFREE  
1X02:02 WAY  
1X15:15 WAY  
REEL  
POST  
90°SMT

DESCRIPTION: 1.25mm PITCH 90° SINGLE ROW WAFER SMT TYPE

煜倫股份有限公司

www.morethanall.com