

Mating Draw (Ref)

Specifications :

1. Current Rating : 0.5A AC/DC
2. Voltage Rating : 50V AC/DC
3. Contact Resistance : 30m ohm. max.
4. Insulation Resistance : 100M ohm. min.at 100V DC
5. Withstanding Voltage : 100V AC for one minute
6. Operating Temperature Range : -20°C to +105°C

Material and Plated :

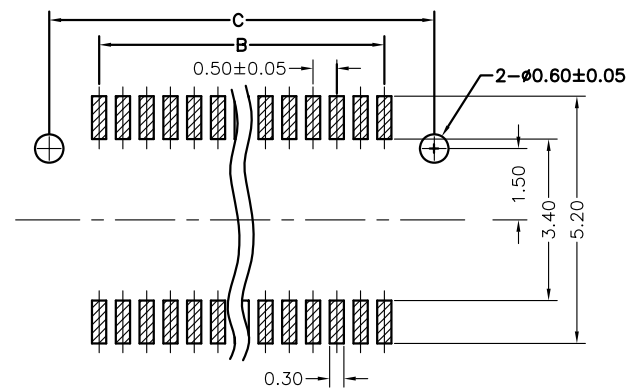
1. Housing : High Temp Plastic (LCP UL94V-0 Beige)
  2. Contact : Phosphor Bronze
  3. Plated : Gold Plated
- Package:800pcs/Reel

\*\*Mating Dimension

P/N(Plug)	P/N(Socket)	Plug Height Dim A1	Mating Height Dim H
DF12-P23P-xxx	DF12-S27P-xxx	2.33	5.00
DF12-P28P-xxx	DF12-S27P-xxx	2.83	5.50

\*\*Contact Dimension :

Contact	DIM. A	DIM. B	DIM. C	DIM. D	Contact	DIM. A	DIM. B	DIM. C	DIM. D
10	4.60	2.00	4.10	3.10	32	10.10	7.50	9.60	8.60
12	5.10	2.50	4.60	3.60	36	11.10	8.50	10.60	9.60
14	5.60	3.00	5.10	4.10	40	12.10	9.50	11.60	10.60
16	6.10	3.50	5.60	4.60	50	14.60	12.00	14.10	13.10
20	7.10	4.50	6.60	5.60	60	17.10	14.50	16.60	15.60
30	9.60	7.00	9.10	8.10					



PCB LAYOUT

RoHS Compliant

TOLERANCES ARE



煜倫股份有限公司

www.morethanall.com

DRAWING BY CY

CHECKED BY GENIUS

UNIT / mm

SCALE 1 : 1

DATE

SIZE A4

PJECTION

X. ±  
X ± 0.20  
.XX ± 0.15  
.XXX ±  
ANG ±

照片框

ORDER INFORMATION

DF12-S27P-xxx-LF

SERIES | LEADFREE  
010-060 WAY  
POST  
2.7mm HIGH  
FEMALE

DESCRIPTION: 0.5mm Board To Board Socket 4.2mm Height Without Metal Tab