

PCB LAYOUT

\*\*Contact Dimension

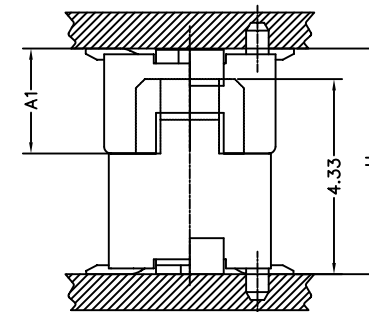
Contact	DIM. A	DIM. B	DIM. C	DIM. D	DIM. E
14	5.60	3.00	5.10	6.55	4.10
20	7.10	4.50	6.60	8.05	5.60
30	9.60	7.00	9.10	10.55	8.10
32	10.10	7.50	9.60	11.05	8.60
36	11.10	8.50	10.60	12.05	9.60
40	12.10	9.50	11.60	13.05	10.60
50	14.60	12.00	14.10	15.55	13.10
60	17.10	14.50	16.60	18.05	15.60

Specifications

1. Current Rating : 0.5A AC/DC
2. Voltage Rating : 50V AC/DC
3. Contact Resistance : 30m ohm. max.
4. Insulation Resistance : 100M ohm. min.at 100V DC
5. Withstanding Voltage : 100V AC for one minute
6. Operating Temperature Range : -20to +105°C

Material and Plating

- 1.Housing : LCP (Natural Color)UL94V-0
  - 2.Contact : Phosphor Bronze
  - 3.Plating : 3u" Gold Flash
- Number Of Conncetors:800pcs/Reel



Mating Draw (Ref)

\*\*Mating Dimension

P/N(Male)	P/N(Female)	Male Height Dim A1	Mating Height Dim H
DF12-P23A-xxx	DF12-S27A-xxx	2.33	5.00
DF12-P28A-xxx	DF12-S27A-xxx	2.83	5.50

RoHS Compliant

TOLERANCES ARE

**MORETHANALL**  
PCB CONNECTORS  
Cable ASSEMBLIES

DRAWING BY CY

X. ±

CHECKED BY GENIUS

.X ± 0.20

UNIT / mm

SCALE 1 : 1

.XX ± 0.15

DATE

.XXX ±

ANG ±

SIZE A4

PJECTION

照片框

ORDER INFORMATION

DF12-S27A-xxx-LF

SERIES LEADFREE  
014-060 WAY  
POST+EAR  
2.7mm HIGH  
FEMALE

煜倫股份有限公司

www.morethanall.com

DESCRIPTION: 0.5mm Board To Board Female 4.2mm Height With Metal Tab