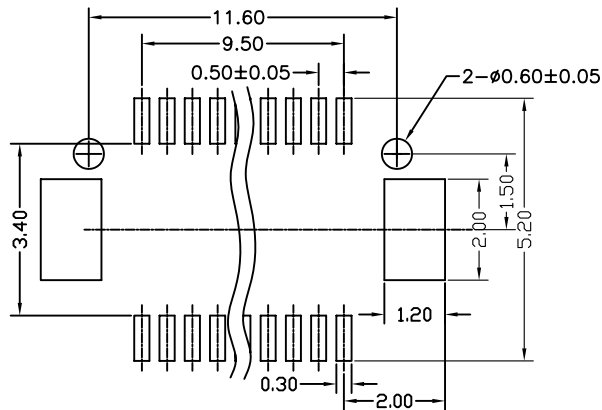
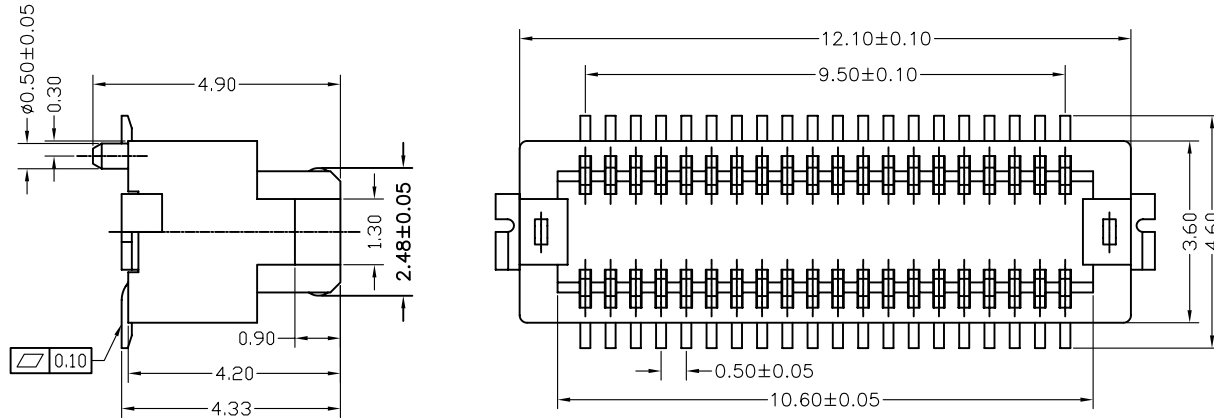


Specifications

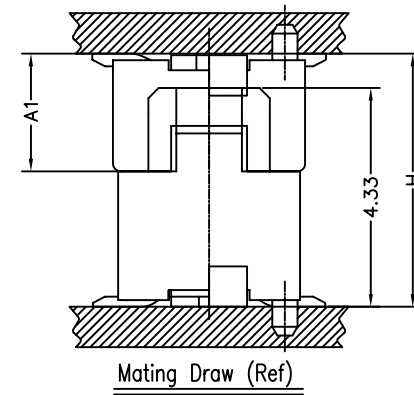
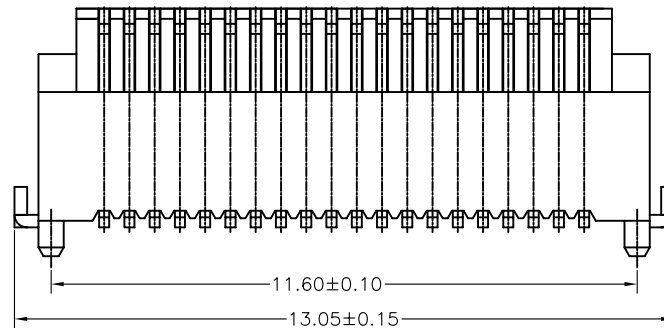
1. Current Rating : 0.5A AC/DC
2. Voltage Rating : 50V AC/DC
3. Contact Resistance : 30m ohm, max.
4. Insulation Resistance : 100M ohm, min.at 100V DC
5. Withstanding Voltage : 100V AC for one minute
6. Operating Temperature Range :  $\text{°C}20\text{to } +105\text{°C}$

Material and Plating

- 1.Housing : LCP (Natural Color)UL94V-0
  - 2.Contact : Phosphor Bronze
  - 3.Plating : 3u" Gold Flash
- Number of Connctetors:800pcs/Reel



PCB LAYOUT



\*\*Mating Dimension

P/N(Male)	P/N(Female)	Male Height Dim A1	Mating Height Dim H
DF12-P23A-040	DF12-S27A-040	2.33	5.00
DF12-P28A-040	DF12-S27A-040	2.83	5.50

RoHS Compliant

TOLERANCES ARE

**MORETHANALL**  
PCB CONNECTORS  
Cable ASSEMBLIES

DRAWING BY CY

X,  $\pm$

CHECKED BY GENIUS

.X  $\pm 0.20$

UNIT / mm

SCALE 1 : 1

.XX  $\pm 0.10$

DATE

.XXX  $\pm$

ANG  $\pm$

照片框

ORDER INFORMATION

DF12-S27A-040-LF

SERIES

LEADFREE

040 WAY

POST+EAR

2.7mm HIGH

FEMALE

煜倫股份有限公司

www.morethanall.com

SIZE A4

PJECTION

DESCRIPTION: 0.5mm Board To Board Female 4.2mm Height With Metal Tab