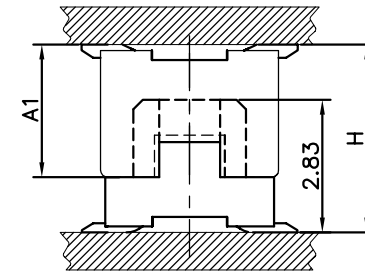


Specifications

1. Current Rating : 0.5A AC/DC
2. Voltage Rating : 50V AC/DC
3. Contact Resistance : 30m ohm. max.
4. Insulation Resistance : 100M ohm. min.at 100V DC
5. Withstanding Voltage : 100V AC for one minute
6. Operating Temperature Range : -20°C to +105°C

Material and Plating

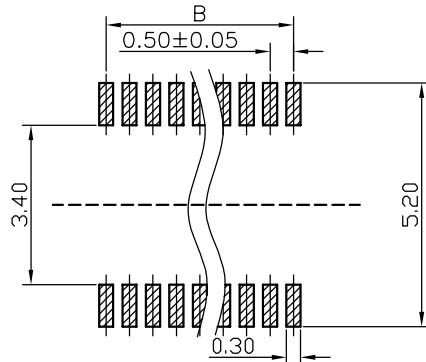
1. Housing : High Temp Plastic UL94V-0
 2. Contact : Phosphor Bronze
 3. Plating : Gold Plating
- Number Of Connectors:1000pcs/Reel



Mating Draw (Ref)

****Mating Dimension**

P/N(Male)	P/N(Female)	Male Height Dim A1	Mating Height Dim H
DF12-P28X-xxx	DF12-S12X-xxx	2.83	4.00
DF12-P33X-xxx	DF12-S12X-xxx	3.33	4.50



PCB LAYOUT

****Contact Dimension**

Contact	DIM. A	DIM. B	DIM. C
12	5.10	2.50	3.70
14	5.60	3.00	4.10
18	6.60	4.00	5.10
20	7.10	4.50	5.60
30	9.60	7.00	8.10
32	10.10	7.50	8.60
36	11.10	8.50	9.60
40	12.10	9.50	10.60
50	14.60	12.00	13.10
60	17.10	14.50	15.60

DF12-S12X-xxx-LF
LEADFREE

RoHS Compliant



煜倫股份有限公司

PART NO. DF12-S12X-xxx

DWG NO. DF12-S12X-xxx

FILE NO.

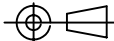
UNIT / mm

SCALE 1:1

CHECKED BY CY

DRAWING BY

PROJECTION



TOLERANCES ARE

- .X ± 0.2
- .XX ±
- .XXX ±
- AWG

DESCRIPTION:

AREA

0.5mm Board To Board Female
2.7mm Height Without Metal Tab And Post

REVISIONS

HK

DATE