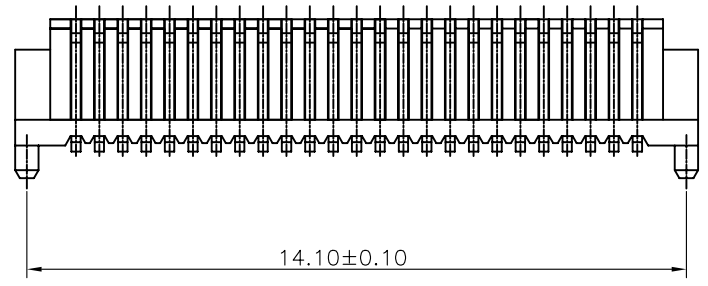


PCB LAYOUT

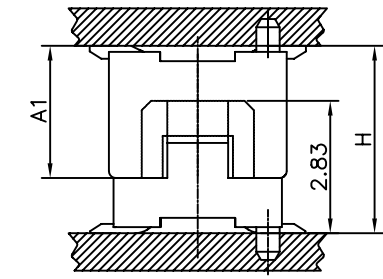


Specifications

1. Current Rating : 0.5A AC/DC
2. Voltage Rating : 50V AC/DC
3. Contact Resistance : 30m ohm. max.
4. Insulation Resistance : 100M ohm. min.at 100V DC
5. Withstanding Voltage : 100V AC for one minute
6. Operating Temperature Range : -20°C to +105°C

Material and Plating

- 1.Housing : LCP (Natural Color)UL94V-0
 - 2.Contact : Phosphor Bronze
 - 3.Plating : Gold Flash
- Number Of Connectors:1000pcs/Reel



Mating Draw (Ref)

**Mating Dimension

P/N(Male)	P/N(Female)	Male Height Dim A1	Mating Height Dim H
DF12-P28P-050	DF12-S12P-050	2.83	4.00
DF12-P33P-050	DF12-S12P-050	3.33	4.50



煜倫有限公司

PART NO. DF12-S12P-050

DWG NO. DF12-S12P-050

FILE NO.

UNIT / mm

SCALE 1:1

CHECKED BY CY

DRAWING BY

PROJECTION

TOLERANCES ARE

.X ± 0.20
.XX ± 0.15
.XXX ±
AWG

DESCRIPTION: 0.5mm Board To Board Female
2.7mm Height Without Metal Tab

AREA	REVISIONS	HK	DATE
------	-----------	----	------