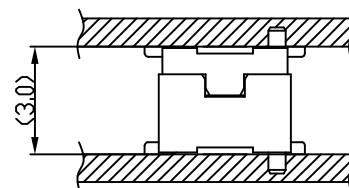
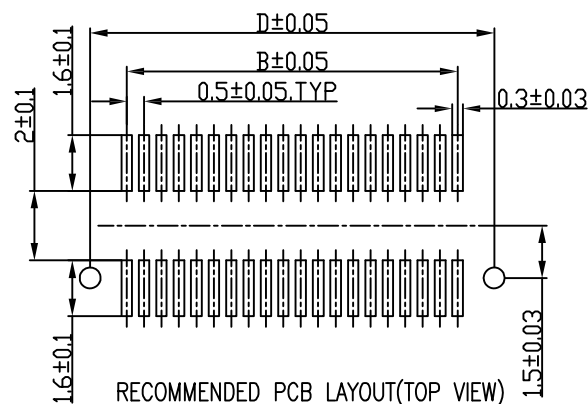
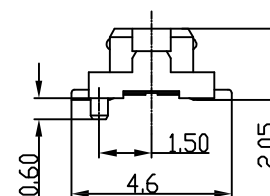
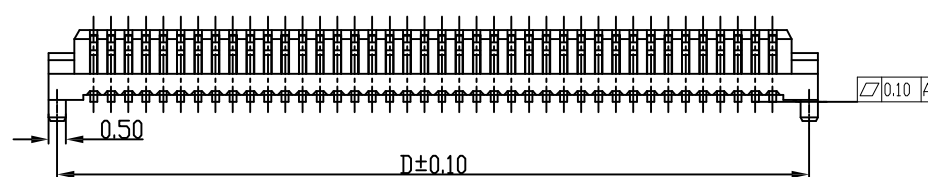


	A	B	C	D
10 PIN	4.60	2.00	3.10	4.10
12 PIN	5.10	2.50	3.60	4.60
14 PIN	5.60	3.00	4.10	5.10
20 PIN	7.10	4.50	5.60	6.60
22 PIN	7.60	5.00	6.10	7.10
24 PIN	8.10	5.50	6.60	7.60
30 PIN	9.60	7.00	8.10	9.10
32 PIN	10.10	7.50	8.60	9.60
36 PIN	11.10	8.50	9.60	10.60
40 PIN	12.10	9.50	10.60	11.60
50 PIN	14.60	12.00	13.10	14.10
60 PIN	17.10	14.50	15.60	16.60
80 PIN	22.10	19.50	20.60	21.60



Note:

Electrical

Current Rating:0.3A max

Contact Resistance:50mΩ max(Initial),75mΩ max(After)

Dielectric Withstanding Voltage:150VAC 1 Minute

Insulation Resistance 500mega ohms min. at 100 VDC

Physical

Housing:thermoplastic, UL 94V-0 rated,inWhite Color

Contact: Copper alloy

Operating Temperature:-40°C to +85°C

RoHS Compliant

TOLERANCES ARE

MORETHANALL
PCB CONNECTORS
Cable ASSEMBLIES

DRAWING BY CY

CHECKED BY GENIUS

UNIT / mm

SCALE 1 : 1

DATE

SIZE A4

X, ±
.X ± 0.30
.XX ± 0.25
.XXX ± 0.15
ANG ±

PJECTION

照片框

ORDER INFORMATION

DF12-S07P-xxx-LF
SERIES | | LEADFREE
010-080 WAY
POST
0.7mm HIGH
FEMALE

煜倫股份有限公司

www.morethanall.com

DESCRIPTION: 0.5PH 3.0H