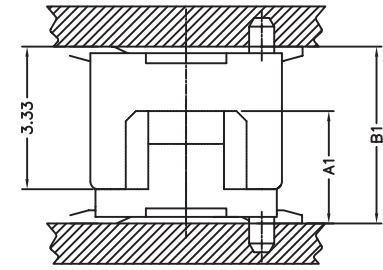
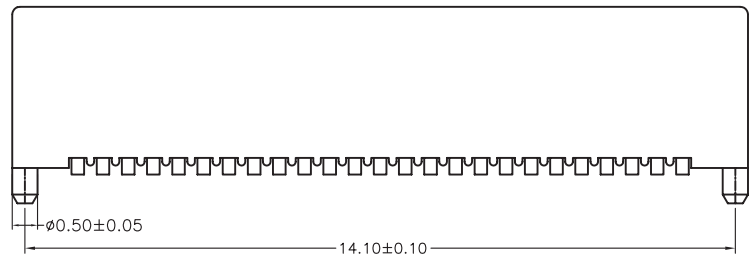


PCB LAYOUT



Mating Draw (Ref)

Specifications

1. Current Rating : 0.5A AC/DC
2. Voltage Rating : 50V AC/DC
3. Contact Resistance : 30m ohm. max.
4. Insulation Resistance : 100M ohm. min.at 100V DC
5. Withstanding Voltage : 100V AC for one minute
6. Operating Temperature Range : -20°C to +105°C

Material and Plating

- 1.Housing : Nylon 46 UL94V-0
  - 2.Contact : Phosphor Bronze
  - 3.Plating : Gold Plating
- Number Of Connectors: 800pcs/Reel

\*\*Mating Dimension

P/N(Male)	P/N(Female)	Female Height Dim A1	Mating Height Dim B1
DF12-P33P-050	DS12-S12P-050	2.83	4.50
DF12-P33P-050	DS12-S32P-050	4.83	6.50

RoHS Compliant

TOLERANCES ARE



煜倫股份有限公司

www.morethanall.com

DRAWING BY CY

CHECKED BY GENIUS

UNIT / mm SCALE 1 : 1

DATE

SIZE A4

- X. ±
- .X ±
- .XX ±
- .XXX ±
- ANG ±

PJECTION



ORDER INFORMATION

DF12-P33P-050-LF



DESCRIPTION: 0.5 B TO B 3.20 HIGH MALE WITHOUT METAL TAB