

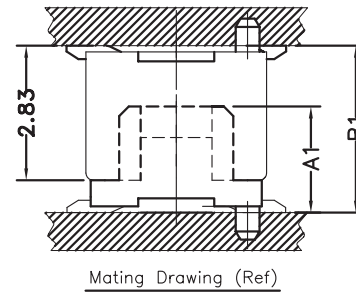
Specifications:

1. Current Rating : 0.5A AC/DC
2. Voltage Rating : 50V AC/DC
3. Contact Resistance : 30m ohm. max.
4. Insulation Resistance : 100M ohm. min.at 100V DC
5. Withstanding Voltage : 100V AC for one minute
6. Operating Temperature Range : -20°C to +105°C

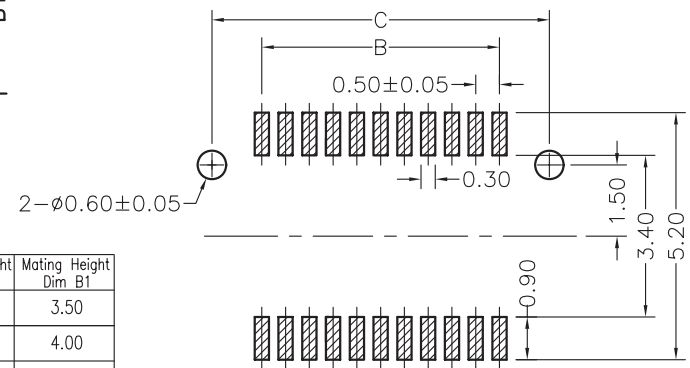
Material and Plated:

1. Housing : High Temp Plastic (Nylon 46 UL94V-0 White)
2. Contact : Phosphor Bronze
3. Plated : Gold Plated

DF12-P28P-xxx-LF
LEADFREE
RoHS Compliant



Mating Drawing (Ref)



PCB LAYOUT

Dimension :

Contact	DIM. A	DIM. B	DIM. C	DIM. D	Contact	DIM. A	DIM. B	DIM. C	DIM. D
10	4.60	2.00	4.10	3.20	30	9.60	7.00	9.10	8.20
12	5.10	2.50	4.60	3.70	32	10.10	7.50	9.60	8.70
14	5.60	3.00	5.10	4.20	36	11.10	8.50	10.60	9.70
18	6.60	4.00	6.10	5.20	40	12.10	9.50	11.60	10.70
20	7.10	4.50	6.60	5.70	50	14.60	12.00	14.10	13.20
22	7.60	5.00	7.10	6.20	60	17.10	14.50	16.60	15.70

**Mating Dimension

P/N(Plug)	P/N(Socket)	Socket Height Dim A1	Mating Height Dim B1
DF12-P28P-xxx	DF12-S07P-xxx	2.33	3.50
DF12-P28P-xxx	DF12-S12P-xxx	2.83	4.00
DF12-P28P-xxx	DF12-S27P-xxx	4.33	5.50
DF12-P28P-xxx	DF12-S32P-xxx	4.83	6.00



PART NO. DF12-P28P-xxx

DWG NO. DF12-P28P-xxx

FILE NO.

CHECKED BY CY

DRAWING BY

TOLERANCES ARE

.X ± 0.2
.XX ±
.XXX ±
AWG

DESCRIPTION:

煜倫股份有限公司

UNIT / mm

SCALE 1:1

PROJECTION



AREA

REVISIONS

HK

DATE