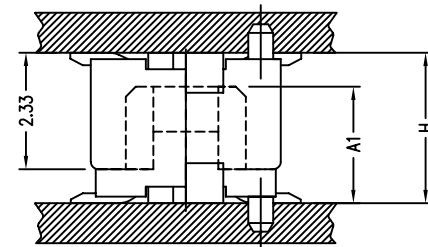
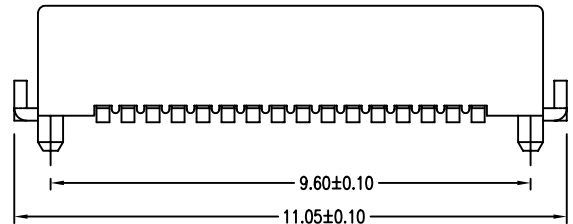


PCB LAYOUT



Mating Draw (Ref)

Specifications

1. Current Rating : 0.5A AC/DC
2. Voltage Rating : 50V AC/DC
3. Contact Resistance : 30m ohm. max.
4. Insulation Resistance : 100M ohm. min.at 100V DC
5. Withstanding Voltage : 100V AC for one minute
6. Operating Temperature Range : 20to +105°C

Material and Plating

- 1.Housing : LCP (Natural Color)UL94V-0
 - 2.Contact : Phosphor Bronze
 - 3.Plating : 3u" Gold Flash
- Number of Connectors:1500pcs/Reel

**Mating Dimension

P/N(Male)	P/N(Female)	Male Height Dim A1	Mating Height Dim H
DF12-P23A-032	DF12-S07A-032	2.33	3.00
DF12-P23A-032	DF12-S27A-032	4.33	5.00



PART NO. DF12-P23A-032

DWG NO. DF12-P23A-032

FILE NO.

APPROVED BY CY

DRAWING BY

PROJECTION

TOLERANCES ARE

.X ±0.20
.XX ±0.15
.XXX
AWG

DESCRIPTION:	0.5mm Board To Board Male 2.2mm High With Metal Tab			
	AREA	REVISIONS	HK	DATE

煜倫有限公司

UNIT / mm

SCALE 1:1