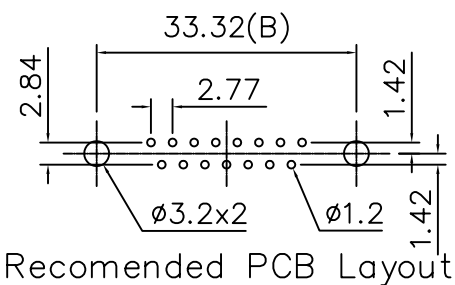
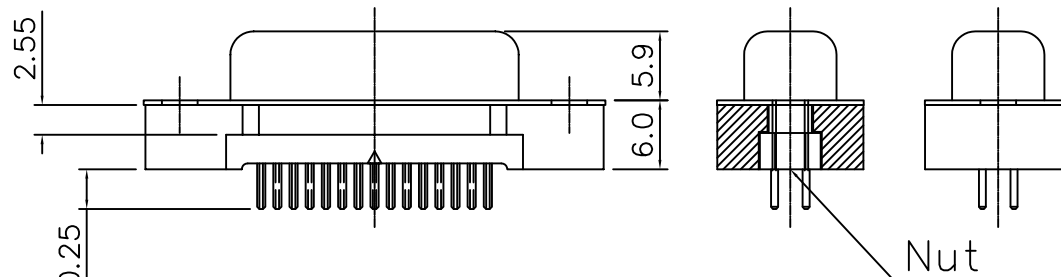


Specifications

Contact Resistance: $\leq 30m$ max. at DC
 100mA Ω
 Insulator Resistance: 1000M min. at DC
 500V
 Current Rating: 5 AMP
 Dielectric Withstanding
 Voltage: AC 1000V For 1 minute
 Operating Temperature: $-55^{\circ}C \sim +105^{\circ}C$
 Contact: Brass
 Housing: PBT & 30% Glass Fiber (UL
 94V-0)
FEMALE



MORETHANALL
 PCB CONNECTORS
 Cable ASSEMBLIES

煜倫股份有限公司

www.morethanall.com

RoHS Compliant

DRAWING BY CY

CHECKED BY GENIUS

UNIT / mm SCALE 1 : 1

DATE

SIZE A4

TOLERANCES ARE

X. \pm
 .X \pm
 .XX \pm
 .XXX \pm
 ANG \pm

PJECTION

照片框

ORDER INFORMATION

DDM-SNM3-15-LF

SERIES | | | LEADFREE
 | | | 15 WAY
 | | M3
 | NUT
 | FEMALE

DESCRIPTION: D-SUB DIP STRAIGHT TYPE W/O METAL REAT SHELL