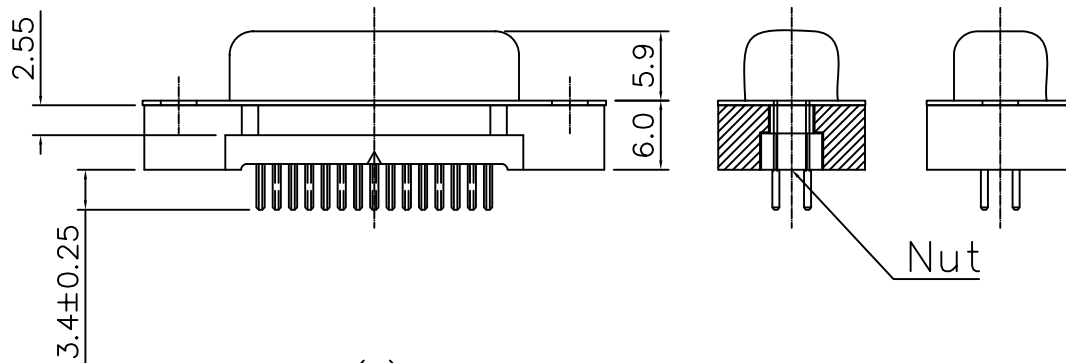


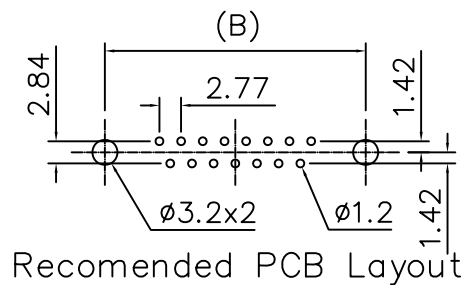
Specifications

Contact Resistance: 30mΩ max. at DC
 100mA
 Insulator Resistance: 1000MΩ min. at DC
 500V
 Current Rating: 5 AMP
 Dielectric Withstanding
 Voltage: AC 1000V For 1 minute
 Operating Temperature: -55°C ~ +105°C
 Contact: Brass
 Housing: PBT & 30% Glass Fiber (UL
 94V-0)



Dimension

Positon	A	B	C
9	16.33	24.99	30.81
15	24.66	33.32	39.14
25	38.38	47.04	53.04
37	54.84	63.50	69.32



RoHS Compliant

TOLERANCES ARE

MORETHANALL
 PCB CONNECTORS
 Cable ASSEMBLIES

DRAWING BY CY

CHECKED BY GENIUS

UNIT / mm

SCALE 1:1

DATE

SIZE A4

PJECTION

X.±
 .X±
 .XX±
 .XXX±
 ANG±

照片框

ORDER INFORMATION

DDM-SN-xx-LF
 SERIES | | LEADFREE
 | | 09-37WAY
 | NUT
 | FEMALE

煜倫股份有限公司

www.morethanall.com

DESCRIPTION: D-SUB DIP STRAIGHT TYPE W/O METAL REAT SHELL