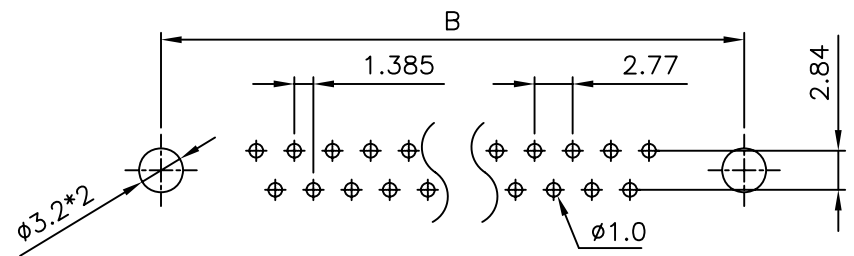


SPECIFICATION
MATERIAL
 Insulator: Thermal Plastic UL94V-0
 Contacts: Copper Alloy
 Shell: Steel
 Rivet, Boardlock: Copper Alloy
CONTACT PLATING
 Underplate: 50u" Nickel
 Contact Area: 1u"~30u" Selective Gold
 Solder Tails Area: 100u" Tin/Lead(Brighten Tin) or
 100u" Tin/Lead Free(Brighten Tin/Matte Tin)
ELECTRICAL
 Operation Voltage: 250 VAC Max.
 Current Rating: 3 Amps Max.
 Contact Resistance: 15 mohms Max.
 Insulation Resistance: 3000 Mohms Min @ 500 VDC
 Dielectric Withstanding Voltage: 1000 VAC / Minute
 Operating Temperature: -55°C To +105°C

POSITION	A	B	C	D
9F	16.30	25.00	30.8	19.2
15F	24.60	33.30	39.2	27.7
25F	38.30	47.10	53.1	41.1
37F	54.80	63.50	69.4	57.3



RECOMMENDED P.C.B LAYOUT(TOP VIEW)
 TOLERANCES: ±0.05mm

DDF-SGZJ-xx-LF
 LEADFREE

RoHS Compliant



PART NO. DDF-SGZJ-xx

DWG NO. DDF-SGZJ-xx

FILE NO.

UNIT / mm

SCALE 1:1

CHECKED BY CY

DRAWING BY

PROJECTION

TOLERANCES ARE
 .X ± 0.3
 .XX ± 0.2
 .XXX ±
 AWG

DESCRIP TION:
 AREA

D-SUB PCB STRAIGHT WITH E.M.I. FILTER
 REVISIONS
 HK
 DATE

焯倫股份有限公司