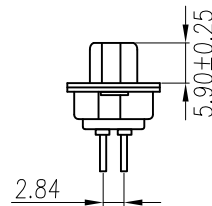
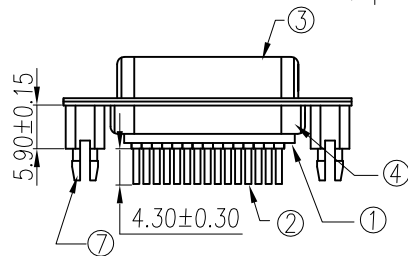
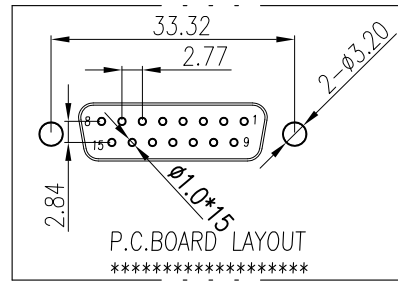
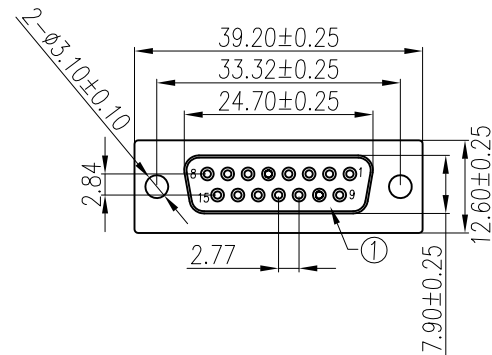
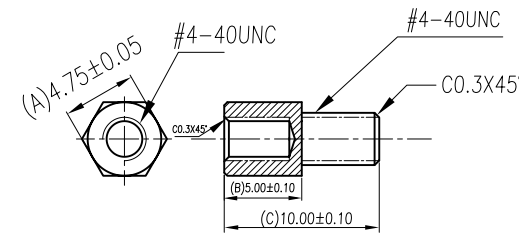


Note:
Specification:

1. Current rating: 1 A Max.
2. Dielectric withstanding voltage: 500 V(ac) for 1 minute.
3. Contact resistance: 30 mΩ Max.
4. Insulation resistance: 1000 MΩ Min at DC 500V.
5. Insertion force: 6.5 Kgf Max.
6. Extraction force: 1.9 Kgf Min.
7. Temperature range: -55°C~+105°C



8	Hex Screw	2	Brass	H5*10	80~120u" Tin Plated
7	Boardlock NUT	2	Brass	H4.75*11.5	80~120u" Nickel Plated
6	8.0 Nut	2	Brass	H4.75*8.0	80~120u" Nickel Plated
5	3B Nut	2	Brass	H4.75*4.75	80~120u" Nickel Plated
4	Back-shell	1	Cold Rolled Steel	T=0.40mm	Cu:40u"min. 80~120u" Tin Plated
3	Front-shell	1	Cold Rolled Steel	T=0.40mm	Cu:40u"min. 80~120u" Nickel Plated
2	Contact	15	Brass	T=0.20mm	Contact area:0.8~1.2u" Gold Plated over 40u" Nickel min. Solder area:80~120u" Tin Plated over 40u" Nickel min.
1	Housing	2	P.B.T	UL 94-V0	Black/Blue/White
No.	Part Name	Q'ty	Material	Remarks & Thickness	Finish



備註:

1. 材質: 黃銅
2. 表面處理: 鍍鎳
3. 螺牙: #4-40UNC

RoHS Compliant

TOLERANCES ARE

MORETHANALL
PCB CONNECTORS
Cable ASSEMBLIES

DRAWING BY CY

X. ±

CHECKED BY GENIUS

.X ± 0.30

UNIT / mm

SCALE 1 : 1

.XX ± 0.20

DATE

.XXX ± 0.10

ANG ±

SIZE A4

PPOJECTION

照片框

ORDER INFORMATION

DD-SGZHxx-15-LF
SERIES | | | | | LEADFREE
15 WAY
FEMALE | | | | | BK:BLACK
FULL/GOLD | | | | | BL:BLUE
CLIP | | | | | WH:WHITE
HEX SCREW

煜倫股份有限公司

www.morethanall.com

DESCRIPTION: