

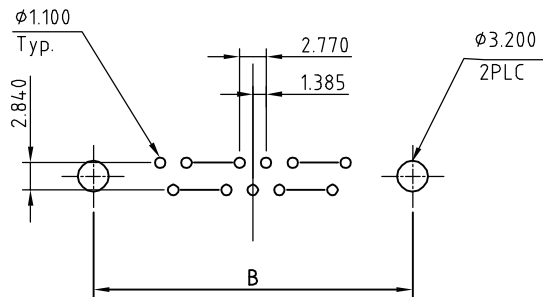
### ELECTRICAL CHARACTERISTICS

Contact Current Rating: 3 Amperes.  
 Dielectric Withstanding Voltage: AC 500V at sea level.  
 Insulation Resistance: 1000 Megohms Min.  
 Contact Resistance: 30 Milliohms Max.  
 Operation Temperature: -55°C to +105°C.

### Material

Contact: Copper Alloy.  
 Insulator: PBT.  
 Shell: SPCC.  
 Screw: Copper Alloy.  
 Boardlock: Copper Alloy.

Recommend Layout PCB.



Note:

No.	A	B	C	D
09	16.92	24.99	30.81	19.23
15	25.25	33.32	39.14	27.56
25	38.96	47.04	53.04	41.28
37	55.42	63.50	69.32	57.33

**RoHS Compliant**

TOLERANCES ARE

**MORETHANALL**  
 PCB CONNECTORS  
 Cable ASSEMBLIES

DRAWING BY CY

CHECKED BY GENIUS

UNIT/ mm

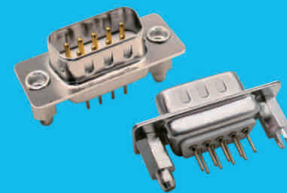
SCALE 1:1

DATE

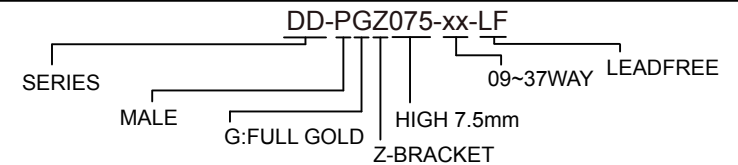
SIZE A4

P PROJECTION

X. ±  
 .X ± 0.30  
 .XX ± 0.25  
 .XXX ± 0.15  
 ANG ±



### ORDER INFORMATION



煜倫股份有限公司

www.morethanall.com

DESCRIPTION: D-SUB Male 180D- DIP