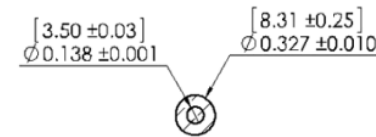


SECTION A-A



SECTION B-B

NOTE: Unless Otherwise Specified:

1. J1, 2.1mm x 5.5mm STRAIGHT FEMALE JACK, BLACK MOLDED ABS.
2. J2, 3.5mm RIGHT ANGLE MONO PLUG, BLACK MOLDED ABS.
3. CABLE, HIGH RELIABILITY CORD TYPE, PARALLEL WITH STRIPPED PIN INDICATOR, #22AWG X2C UL2468 .
4. ALL PLUGS AND CABLES SHOULD MEET THE STANDARD SAFETY REGULATIONS, UL/cUL and CE APPROVED.
5. DC VOLTAGE SHOULD NOT EXCEED 30V
6. 1st ARTICLE IS REQUIRED FROM VENDOR.

DCPN-2102R22-A6N-LF  
LEADFREE  
RoHS Compliant

**MORETHANALL**  
CONNECTORS  
ASSEMBLIES

PART NO. DCPN-2102R22-A6N

DWG NO. DCPN-2102R22-A6N

FILE NO.

CHECKED BY CY

DRAWING BY

TOLERANCES ARE

X, ±  
.X ± 0.25  
.XX ± 0.15  
.XXX ± 0.05  
ANG

DESCRIPTION: 2.1x5.5 母頭 - 3.5ST 90°公頭

煜倫股份有限公司

UNIT / mm

SCALE 1:1

PROJECTION



AREA

REVISIONS

DATE