

SPECIFICATIONS:

1. ELECTRICAL CHARACTERISTICS:

1-1. RATING:

1-2. CONTACT RESISTANCE: 30mΩ MAX.(INITIAL)

1-3. DIELECTRIC WITHSTANDING VOLTAGE: 500V AC FOR ONE MINUTE

1-4. INSULATION RESISTANCE: 100MΩ MIN. MEASURED BY 500V DC

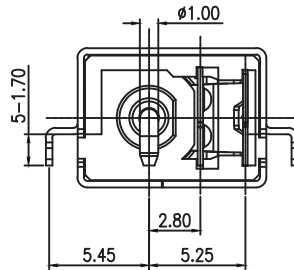
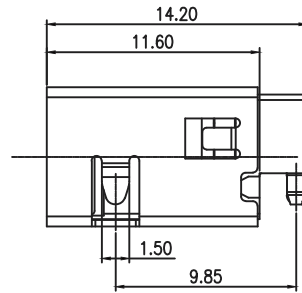
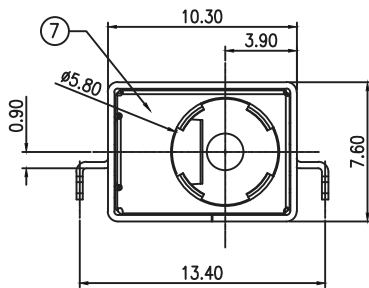
2. MECHANICAL CHARACTERISTICS:

2-1. INSERTION FORCE : 0.3~3.0 KGF

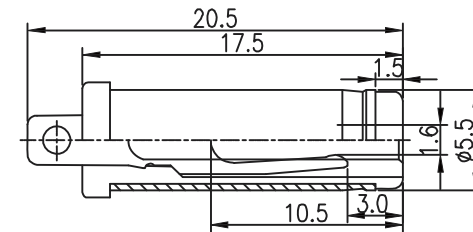
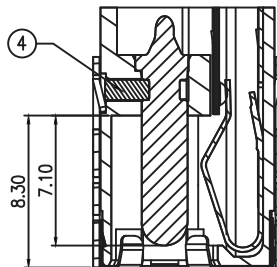
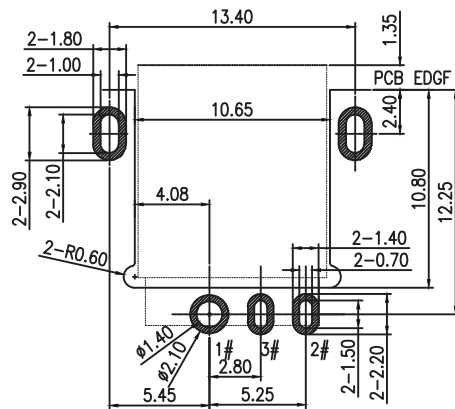
2-2. WITHDRAWAL FORCE : 0.3~3.0 KGF

3. LIFE TEST: 5,000 CYCLES MIN.

4. FOR REFLOW SOLDERING LEAD-FREE PROCESS.



CAT. NO.	PIN	SCHEMATIC
DCJ-RFM-20	Ø2.0	



MATING PLUG Ø5.50

RECOMMEND P.C.B LAYOUT
TOP VIEW (TOLERANCES:0.05)

7	GROUNDING	1	SUS	t=0.10	N/A
6	SHIELDING	1	BRASS	t=0.35	Ni(60u") PLATED
5	PIN	1	BRASS BAR		Ni(50u") PLATED
4	STOPPER	1	SUS	t=0.30	CLEANING
3	SHUNT TERMINAL	1	BRASS STRIP	t=0.30	Ag(20u") OVER Ni(20U")
2	TIP SPRING	1	COPPER ALLOY	t=0.25	Ag(20u") OVER Ni(20U")
1	HOUSING	1	HIGH TEMP.THFRMOPLASTIC		UL94V-0(BLACK)
LTR	PART NAME	QTY	MATERIAL		REMARK

UNLESS OTHERWISE SPECIFIED, TOLERANCE ON DECIMAL: ±0.3

RoHS Compliant

TOLERANCES ARE

MORETHANALL
PCB CONNECTORS
Cable ASSEMBLIES

DRAWING BY CY

X.±

CHECKED BY GENIUS

.X±

UNIT / mm

SCALE 1 : 1

.XX±

DATE

.XXX±

ANG±

SIZE A4

PPOJECTION

照片框

ORDER INFORMATION

DCJ-RFM-20-LF
SERIES | | | LEADFREE
| | | 2.00
| | | METAL
| | | OFFSET
| | | DIP 90°

煜倫股份有限公司

www.morethanall.com

DESCRIPTION:DC POWER JACK