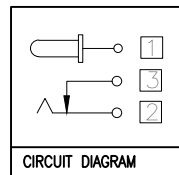
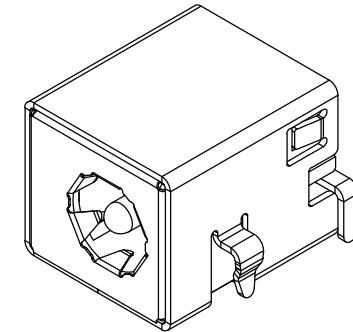
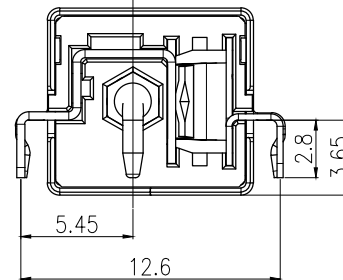
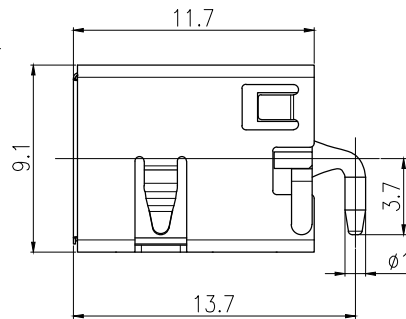
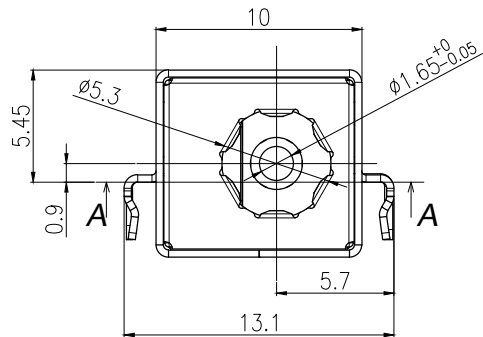
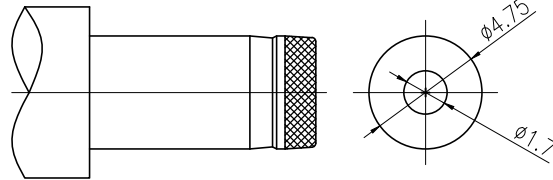


- NOTE :
- 1.RATING: DC 20V 5.5A
  - 2.INSERTION FORCE:2.94~29.4N(0.3~3Kgf)  
WITHDRAWAL FORCE:2.94~29.4N(0.3~3Kgf)
  - 3.INSULATION RESISTANCE BETWEEN ANY ADJACENT TERMINAL SHALL NOT BE LESS THAN 100MΩ BY 500 VOLTS MEGGER
  - 4.JACK SHALL WITHSTAND 500 VOLTS BETWEEN ANY ADJACENT TERMINAL FOR ONE MINUTE
  - 5.CONTACT RESISTANCE SHALL NOT EXCEED 0.03Ω
  - 6.JACK SHALL WITHSTAND 5,000 CYCLES OF INSERTION AND WITHDRAWAL WITH TESTING PLUG. AND CONTACT RESISTANCE SHALL NOT EXCEED 0.06Ω
  - 7.MEASURING CONDITION:  
TEMPERATURE:FROM 5° TO 35°  
RELATIVE HUMIDITY FROM 40% TO 85%
  - 8.GREEN PRODUCT IDENTIFICATION MARK ON JACK:
  - 9.GREEN PRODUCT IDENTIFICATION LABEL ON PACKAGING
  - 10.FOR LEAD-FREE PROCESS



□ : TERMINAL NO.



DC MATE PLUG

UNLESS OTHERWISE SPECIFIED, TOLERANCE ON DECIMAL:±0.3

7	Ground terminal	1	SUS301 t=0.1	
6	Shield	1	Brass t=0.35	Ni 50u"Min
5	Terminal	1	Brass t=0.4	
4	Shunt terminal	1	Brass t=0.4	Ag 20u"Min,Ni 20u"Min
3	Tip spring	1	Phosphor bronze t=0.3	Ag 20u"Min,Ni 20u"Min
2	Center pin	1	Zinc alloy	Ni 50u"Min
1	Housing	1	PA9T UL94V-0	
LTR	PART NAME	QTY	MATERIAL	REMARK

RoHS Compliant

TOLERANCES ARE

**MORETHANALL**  
PCB CONNECTORS  
Cable ASSEMBLIES

煜倫股份有限公司

www.morethanall.com

DRAWING BY CY

CHECKED BY GENIUS

UNIT / mm

SCALE 1 : 1

DATE

SIZE A4

X, ±

.X, ±

.XX, ±

.XXX, ±

ANG ±

PPOJECTION

照片框

ORDER INFORMATION

DCJ-RF54-165-LF  
SERIES  
LEADFREE  
1.65Ø  
5.45mm  
FULL METAL  
DIP 90°

DESCRIPTION: