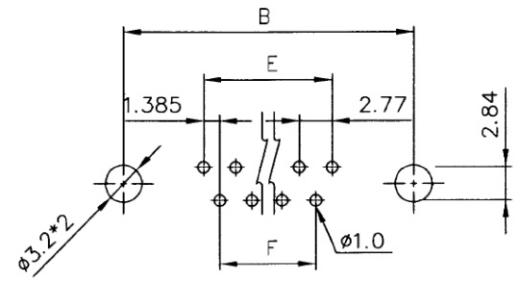
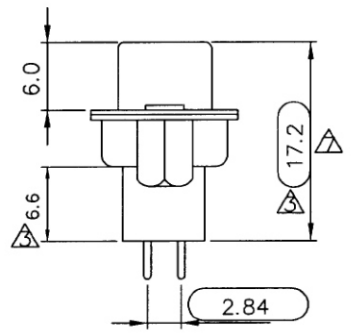
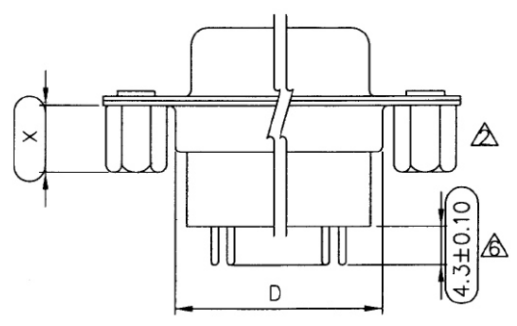


SPECIFICATION
MATERIAL
 ⚠ Insulator: Thermal Plastic UL94V-0
 ⚠ Contacts: Copper Alloy
 ⚠ Shell: Steel
 ⚠ Rivet,Boardlock: Copper Alloy
CONTACT PLATING
 ⚠ Underplate: 50u"~100u" Nickel
 ⚠ Contact Area: 1u"~30u" Selective Gold
 ⚠ Solder Tails Area: 100u"~200u" Tin/Lead(Brighten Tin)or 100u"~200u" Tin/Lead Free(Brighten Tin/Matte Tin)

ELECTRICAL
 Operation Voltage: 250 VAC max.
 Current Rating: 3 Amps max.
 Contact Resistance: 15 mohms max.
 Insulation Resistance: 3000 Mohms min @ 500 VDC
 Dielectric Withstanding Voltage: 1000 VAC / minute
 Temperature Range: -55°C TO +105°C



RECOMMENDED P.C.B LAYOUT(TOP VIEW)
 TOLERANCES: ±0.05mm

PROCESS OPTION DIM. FOR "X":

3	3.8mm
5	5.8mm
2	2.5mm
1	10.8mm

POSITION	A	B	C	D	E	F
9F	16.30	25.00	30.8	19.2	11.08	8.31
15F	24.60	33.30	39.2	27.7	19.39	16.62
25F	38.30	47.10	53.1	41.1	33.24	30.47
37F	54.80	63.50	69.4	57.3	49.86	47.09

DCD-SSNxH-xx-LF
 LEADFREE

RoHS Compliant



PART NO. DCD-SSNxH-xx

DWG NO. DCD-SSNxH-xx

FILE NO.

UNIT / mm

CHECKED BY CY

DRAWING BY

SCALE 1:1 PROJECTION

TOLERANCES ARE
 .X ± 0.2
 .XX ± 0.1
 .XXX ±
 AWG

DESCRIP TION:			
AREA	REVISIONS	HK	DATE

煜倫股份有限公司