

PCB MOUNTING LAYOUT

NOTES

- (1) MATERIAL: 0.3MM THICK PHOSPHOR BRONZE NICKEL PLATED
- (2) TOLERANCE: ISO 2768-M, UNLESS OTHERWISE SPECIFIED
- (3) PROCESS CORNER R=0.30MM
- (4) SURFACE NO BURRS, NO GREASE

RoHS Compliant

TOLERANCES ARE

**MORETHANALL**  
PCB CONNECTORS  
Cable ASSEMBLIES

煜倫股份有限公司

www.morethanall.com

DRAWING BY CY

CHECKED BY GENIUS

UNIT / mm SCALE 1 : 1

DATE

SIZE A4

X. ±  
.X ±  
.XX ±  
.XXX ±  
ANG ±

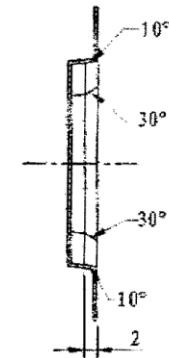
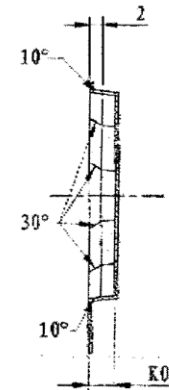
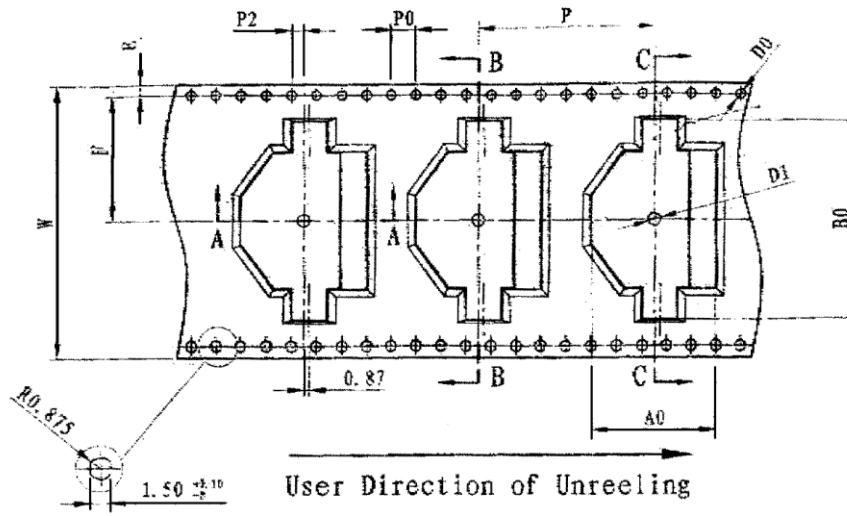
PJECTION

照片框

ORDER INFORMATION

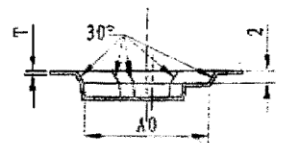
BTH-W38R-20-LF  
SERIES | REEL | HIGH 3.85mm | 90°SMT  
LEADFREE  
CR2032

DESCRIPTION:

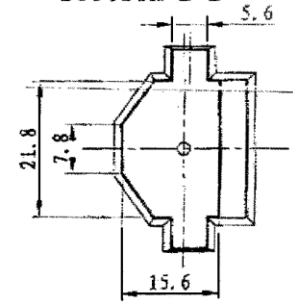


Section B-B

Section C-C



Section A-A



未标注斜角为: 5°

ITEM	W	A0	B0	K0	P	F	E	D0	D1	P0	P2	T
DIM	44.0 <sup>+0.30</sup> <sub>-0.30</sub>	19.94 <sup>+0.10</sup> <sub>-0.10</sub>	31.9 <sup>+0.15</sup> <sub>-0.15</sub>	4.20 <sup>+0.10</sup> <sub>-0.10</sub>	28.0 <sup>+0.10</sup> <sub>-0.10</sub>	20.2 <sup>+0.10</sup> <sub>-0.10</sub>	1.75 <sup>+0.10</sup> <sub>-0.10</sub>	∅1.50 <sup>+0.10</sup> <sub>-0.02</sub>	∅2.00 <sup>+0.10</sup> <sub>-0.00</sub>	4.00 <sup>+0.15</sup> <sub>-0.15</sub>	2.00 <sup>+0.10</sup> <sub>-0.10</sub>	0.40 <sup>+0.05</sup> <sub>-0.05</sub>
ALTERNATE												

- 1.10 sprocket hole pitch cumulative tolerance ±0.20 mm.
2. Carrier camber not to exceed 1 mm in 250 mm.
3. A0 and B0 measured on a plane 0.3 mm above the bottom of the pocket.
4. K0 measured from a plane on the inside bottom of the pocket to the pocket the top surface of the carrier.
5. All dimensions meet EIA-481-B requirements.
6. Material: Brack conductive polystyrene.
7. Packing length per 22" reel: 43.8 Meters.
8. Component load per 13" reel: 500 pcs. 14.6 Meters.

RoHS Compliant

TOLERANCES ARE

照片框

ORDER INFORMATION

BTH-W38R-20-LF  
 SERIES | T LEADFREE  
 | CR2032  
 | REEL  
 | HIGH 3.85mm  
 | 90°SMT

**MORETHANALL**  
 PCB CONNECTORS  
 Cable ASSEMBLIES

煜倫股份有限公司

www.morethanall.com

DRAWING BY CY

CHECKED BY GENIUS

UNIT / mm SCALE 1:1

DATE

SIZE A4

X, ±  
 .X ±  
 .XX ±  
 .XXX ±  
 ANG ±

PJECTION

DESCRIPTION: