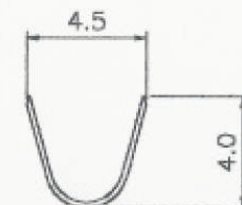
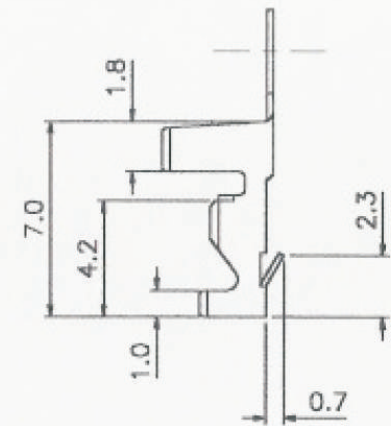
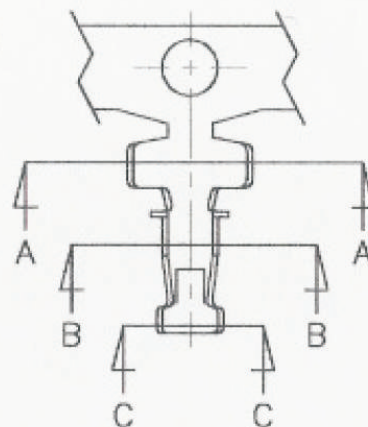


P.C. Board Crimp Terminal

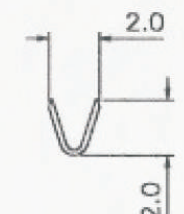
Features/Dimensions

- * Secures wire to P.C. board before wave soldering
- * Wire solders directly to P.C. board
- * No additional contact resistance
- * Low profile
- * Applicable P.C. board thickness: 1.60 mm(.063")

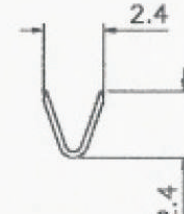
1.8mm



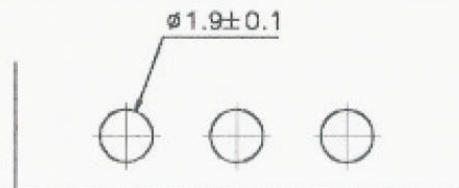
Section A-A'



Section B-B'



Section C-C'



P.C. Board Hole Dimensions

Part NO.	Wire range	Insulation O.D.	Material	Finish	Qty/reel
BT-D18-22	AWG #18~#22	3.05mm.(MAX.)	Bronze	Tin-plated	5000 PCS

BT-D18-22-LF
LEADFREE
RoHS Compliant



PART NO. BT-D18-22		CHECKED BY CY		TOLERANCES ARE .X ± 0.2 .XX ± .XXX ± AWG	DESCRIPTION: HDMI SMT 19PIN FEMALE		
DWG NO. BT-D18-22		DRAWING BY					
FILE NO.		PROJECTION		AREA	REVISIONS	HK	DATE

煜倫股份有限公司

UNIT / mm SCALE 1:1