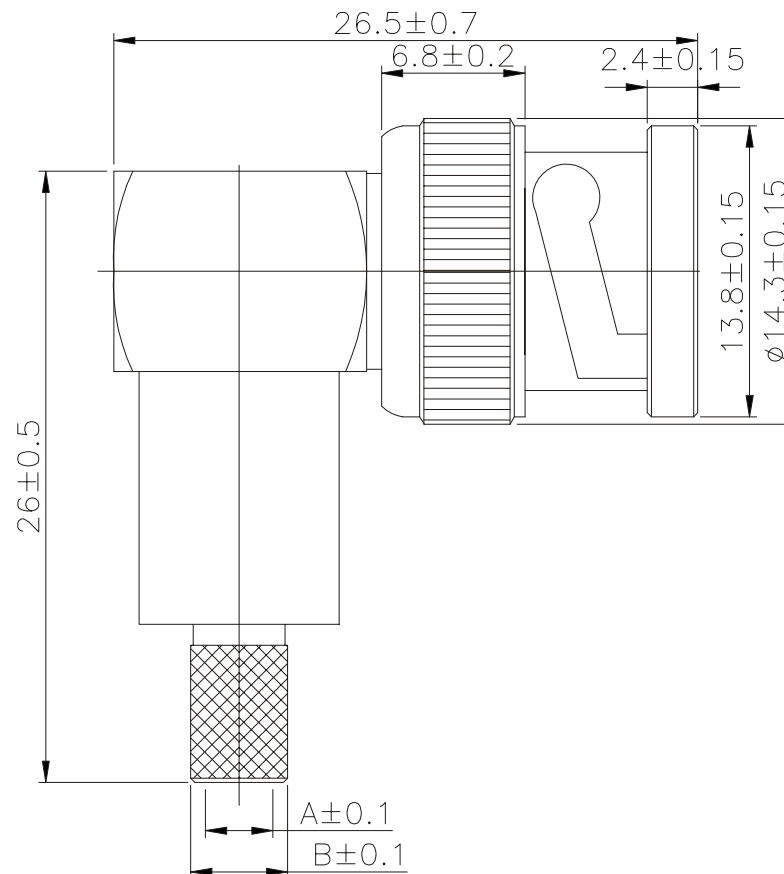
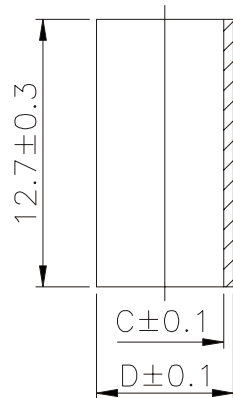


	A	B	C	D
RG/58U	∅3.2	∅4.6	∅5.6	∅6.5
RG/59U	∅3.9	∅5.6	∅6.4	∅7.3
RG/6U	∅5.1	∅6.5	∅7.5	∅8.2



14	SLEEVE	BRASS	NICKEL	1
13	BODY	BRASS	NICKEL	1
12	INSULATOR	POM	NONE	1
11	SPRING	BRASS	NICKEL	1
10	CENTER CONTACT	BRASS	NONE	1
9	INSULATOR	POM	NONE	1
8	WASHER	FE	NICKEL	1
7	SPRING	FE	NONE	1
6	RUBBER WASHER	PVC	NONE	1
5	OUT CONTACT	ZINC	NICKEL	1
4	INSULATOR	POM	NONE	1
3	CENTER CONTACT	BRASS	GOLD	1
2	SHELL	ZINC	NICKEL	1
1	BODY	BRASS	NICKEL	1
NO	DESCRIPTION	MATERIAL	FINISH	QTY

BNC-PCR-xx-LF
LEADFREE

58:RG/58U
59:RG/59U
6:RG/6U

MORETHANALL
CONNECTORS
ASSEMBLIES

PART NO. BNC-PCR-xx

RoHS Compliant

DWG NO. BNC-PCR-xx

CHECKED BY CY

TOLERANCES ARE

DESCRIPTION:

BNC MALE RIGHT ANGLE CRIMP TYPE

FILE NO.

DRAWING BY

.X ± 0.2
.XX ± 0.1
.XXX ±
AWG

AREA

REVISIONS

HK

DATE

焯倫股份有限公司

UNIT / mm

SCALE 1:1

PROJECTION

