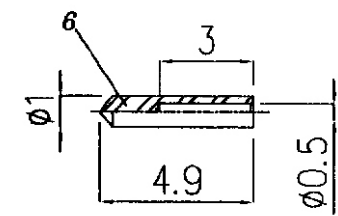
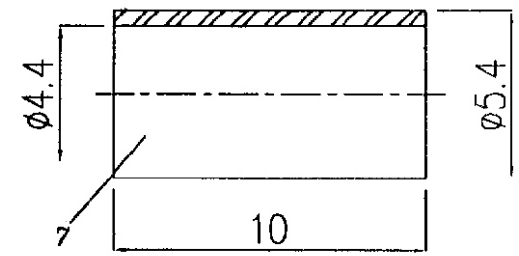
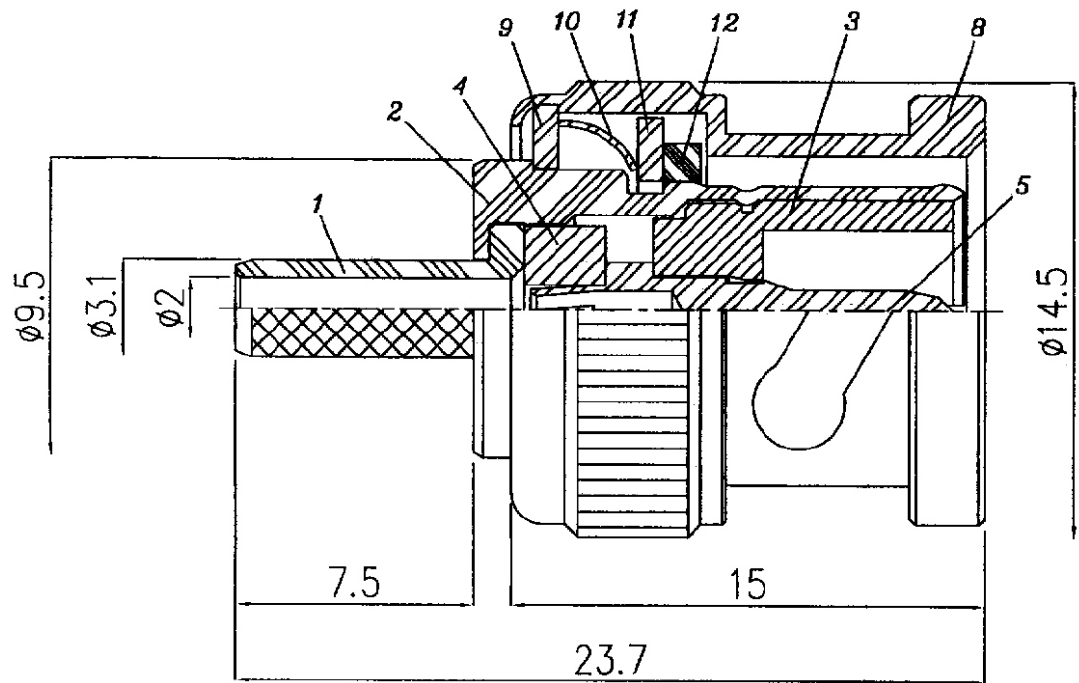


1 2 3 4 5 6 7 8 9 0

J
I
H
G
F
E
D
C
B
A



BNC-PC-212-LF
LEADFREE
RoHS Compliant

| NO | DESCRIPTION | Q'TY | ITEM NO. | MATERIAL | PLATING |
|----|----------------|------|-------------|-----------------------|---------|
| 1 | BODY 1 | 1 | B-111-ST212 | BRASS | NICKEL |
| 2 | BODY 2 | 1 | B-111-ST212 | BRASS | GOLD |
| 3 | DIELECTRIC 1 | 1 | D-070014 | DELRIN | - |
| 4 | DIELECTRIC 2 | 1 | D-050001 | DELRIN | - |
| 5 | CENTER PIN 1 | 1 | B-111L-1 | BRASS | GOLD |
| 6 | CENTER PIN 2 | 1 | B-111-ST212 | BRASS | GOLD |
| 7 | FERRULE | 1 | F-05003 | BRASS | NICKEL |
| 8 | SHELL | 1 | S-14001 | BRASS | NICKEL |
| 9 | WASHER | 1 | W-12001 | BRASS | NICKEL |
| 10 | WASHER | 1 | W-10001 | SK5 HIGH CARBON STEEL | NICKEL |
| 11 | RETAINING RING | 1 | CW-12001 | BRASS | NICKEL |
| 12 | GASKET | 1 | G-10001 | RUBBER | - |



PART NO. BNC-PC-212

DWG NO. BNC-PC-212

CHECKED BY CY

TOLERANCES ARE

FILE NO.

DRAWING BY

.X ± 0.2
.XX ± 0.1
.XXX ±
AWG

DESCRIPTION: BNC STRAIGHT PLUG CRIMP

焯倫股份有限公司

UNIT / mm

SCALE 1:1

PROJECTION

AREA

REVISIONS

HK

DATE