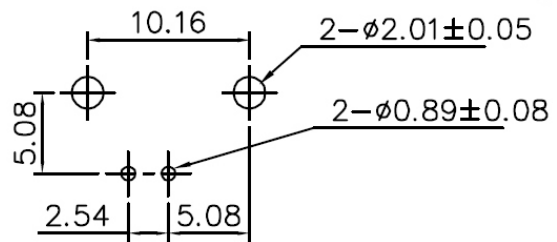
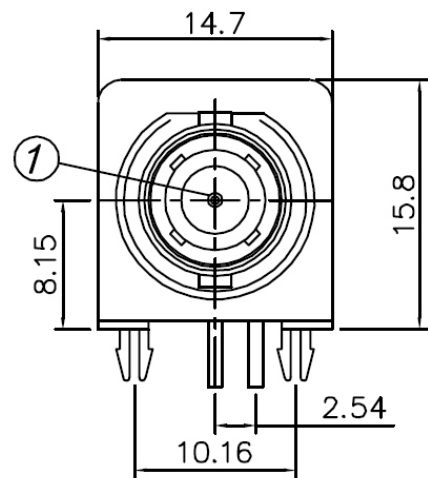
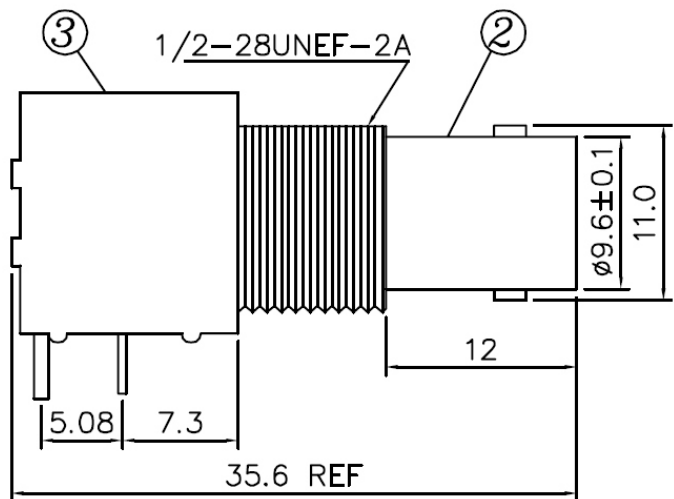
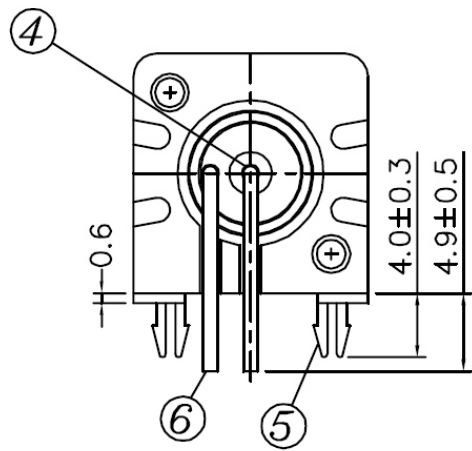
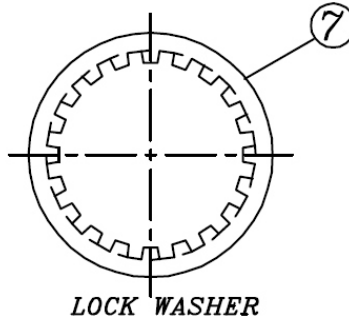


1 2 3 4 5 6 7 8 9 0

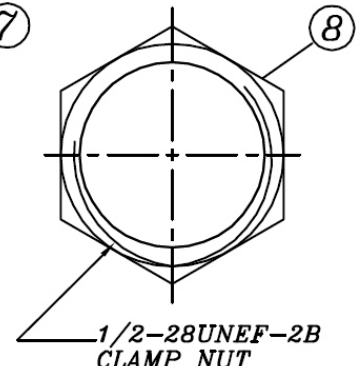
J
I
H
G
F
E
D
C
B
A



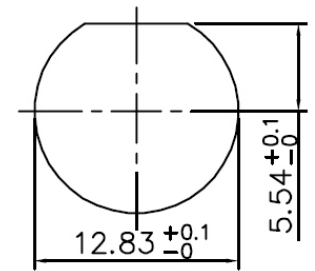
RECOMMENDED PC BOARD LAYOUT
WITHOUT MOUNTING POSTS



LOCK WASHER



1/2-28UNEF-2B
CLAMP NUT



RECOMMENDED MOUNTING HOLE
MAXIMUM PANEL THICKNESS: 5.5MM

MATERIAL & FINISH

- ① CENTER CONTACT : BRONZE, GOLD PLATING
- ② BODY : ZINC ALLOY NICKEL PLATING
- ③ HOUSING : PBT (94 V-0) WHITE
- ④ INSULATOR : PE-606

- ⑤ MOUNTING POST : BRONZE, TIN PLATING
- ⑥ SOLDER TAIL : COPPER WIRE, TIN PLATING
- ⑦ WASHER : STEEL, NICKEL PLATING
- ⑧ NUT : BRASS, NICKEL PLATING

BNC-JRZ15WWH-75-LF
LEADFREE

RoHS Compliant



PART NO. BNC-JRZ15WWH-75		CHECKED BY CY		TOLERANCES ARE .X ± 0.2 .XX ± .XXX ± AWG	DESCRIP TION:			
DWG NO. BNC-JRZ15WWH-75		DRAWING BY						
FILE NO.		PROJECTION		AREA	REVISIONS	HK	DATE	
UNIT / mm	SCALE 1:1							

煜倫股份有限公司