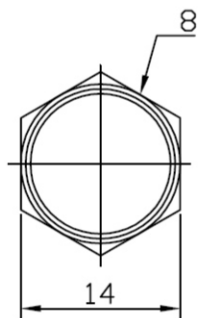
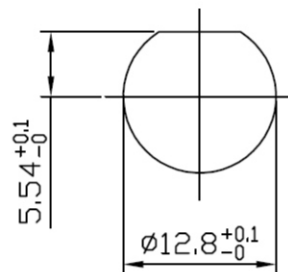


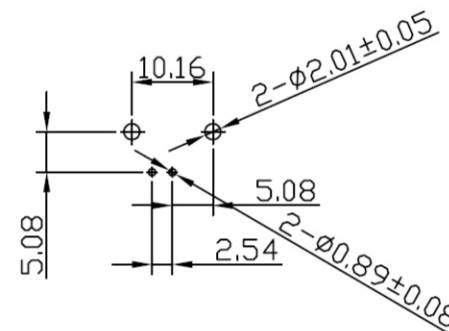
LOCK WASHER



1/2-28UNEF-2B
CLAMP NUT



RECOMMENDED MOUNTING HOLE
MAXIMUM PANEL THICKNESS: 5.5MM
RECOMMENDED MOUNTING TORQUE:
12 INCH-POUNDS MAX



BNC-JRZ13WWH-75-LF
LEADFREE
RoHS Compliant

NO	DESCRIPTION	MATERIAL	FINISH	QTY
8	NUT	BRASS	NICKEL	1
7	WASHER	STEEL	NICKEL	1
6	SOLDER TAIL	COPPER WIRE	TIN LEAD	1
5	MOUNTING POST	BRONZE	TIN LEAD	1
4	INSULATOR	DELFIN	NONE	1
3	HOUSING	PBT	WHITE	1
2	BODY	ZINC ALLOY	NICKEL	1
1	CENTER CONTACT	BRONZE	GOLD	1

MORETHANALL
CONNECTORS
ASSEMBLIES

PART NO. BNC-JRZ13WWH-75

DWG NO. BNC-JRZ13WWH-75

CHECKED BY CY

FILE NO.

DRAWING BY

TOLERANCES ARE

.X ± 0.2
.XX ± 0.1
.XXX ±
AWG

DESCRIPTION:

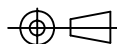
75OHM BNC R/A PCB
PANEL MOUNT JACK

焯倫股份有限公司

UNIT / mm

SCALE 1:1

PROJECTION



AREA

REVISIONS

HK

DATE